

# *Round About*

*the villages of Langford Budville  
and Runnington*



*June/July 2023*





# CONTENTS

- 1 Welcome
- 2 What's On
- 4 Parish council News
- 5 Jubilee Hall
- 8 Coronation Weekend
- 11 Welcome & Farewell
- 12 Green Gardening Group
- 12 Cafe Plus
- 13 On the Common
- 14 Conservation Group
- 14 Bee Walk
- 15 Wellbeing: Creams
- 16 Flooding at Chipley
- 17 Langford Ladies
- 17 Friendship Circle
- 18 Seasonal Treats
- 19 Green Fingers
- 20 News from the Churches
- 22 Our School
- 23 Young Buddies: Monarchs
- 24 Baby & Toddler Group
- 30 Community Contacts
- 35 Local Transport Services
- 36 Magazine Information



# Welcome...

To the June/July edition of Round About.

It's been a busy couple of months with a **Coronation** and three public holidays. The weather has been wildly variable with cold, wind, torrential rain causing widespread **flash floods**, and some lovely sunny days. The bluebells are almost over, but the orchids are coming out on the Common. So lots to look forward to.

We try to bring you all the news that matters: our **Parish Council** works hard on your behalf. Meet the members inside. We have some **farewells** and **welcomes** to say. The ongoing **work on the Common** is reviewed in a report from **SWT**.

There's still work to be done on our new **Jubilee Wood** and we plan a group photo to commemorate the planting. **Our School** has had a bit of a face lift, along with our **Churches** courtesy of the **Big Help Out**.

**The Village Hall** has a new notice board - do check it out. It continues to be a centre for the community to come together: at **Café Plus**, events like the **Coronation Big Breakfast** and for the **Friendship Circle**, **Langford Ladies**, Table tennis, bridge and various other classes and activities to take place. It is also a great place for parties! A brand new **Baby & Toddler Group** will be starting as we seem to have a good number of new very young residents.

There are lots of ways to make new friends and help your community. The **Green-fingered** among you can grow veggie favourites, and join the **Greener Gardening Group**. Those whose interests are in wildlife and conservation can find ways of helping - go on a **Bee Walk**, or join the **conservation volunteers**. The Hall Trustees would love more people to come forward - as volunteers or with ideas of events to bring the community together. And **Round About** itself would love some input from readers - what they'd like to see, photos from around the villages, favourite seasonal recipes, gardening advice and news of new arrivals to be made welcome in your neighbourhood.

This issue will be my swan song! I will be handing over control of **Round About** to the other lovely members of the editorial team, with my blessing to change and adapt Round About to make it easier to manage. I know they will keep it relevant and interesting, but there may be changes to the style and look of the magazine as they adapt it. Round About has been in its current format for nine years, and I have been involved for most of those. Most of the team have been working with me for several years and they will continue to be supported by our regular contributors, our volunteer distributors, proof-readers and our faithful advertisers. Thank you to them all for all the help over the years. I could not have done it without you! I will be around for a while until my house sale goes through, but undoubtedly very busy. I will help where I can while I am here. And if any of our readers would like to help them in any capacity, they will be delighted.

*Saranne Cessford on behalf of the editorial Team.*

*Tryphena Huntingford, Jane Hancock, Denise Hunt, Ali Eland and Fiona Barber.*

[lbr.roundabout@gmail.com](mailto:lbr.roundabout@gmail.com)

# What's On:

| Function   | Venue                               | Date                         | Time                  |
|--|-------------------------------------|------------------------------|-----------------------|
| Police Beat Surgeries                            | Jubilee Hall Car Park               | Wed. 21 June<br>Wed 19 July  | 2.00 - 3.00 pm        |
| Parish Council meeting                           | Jubilee Hall                        | Mon. 12 June<br>Mon. 10 July | 6.30 pm—all welcome   |
| Blood donor Service                              | Jubilee Hall                        | Mon. 19 June<br>Mon. 24 July | 10.30 am - 8.30 pm    |
| Friendship Circle:<br>Ploughman's Lunch          | Jubilee Hall                        | Fri .2 June                  | 11.00 am - 12.30 pm   |
| Langford Budville Jubilee Hall AGM               | Jubilee Hall                        | Mon. 5 June                  | 7.00 pm               |
| Conservation workgroup:<br>Jubilee Wood action   | Meet at Jubilee Seat                | Mon. 5 Jun.                  | 10.00am - lunch       |
| Drone Photo Jubilee Wood                         | Langford Lakes car park             | Sun. 11 Jun.                 | 11.00 am              |
| Kittisford Open Gardens                          | Kittisford                          | Sun 11 June                  | 2.00 - 6.00 pm        |
| Friendship Circle: Trip to Dartmouth             | Meet at Jubilee Hall                | Fri. 16 June                 | 9.15 am               |
| Budvue: Empire of Light                          | Jubilee Hall                        | Sat. 17 June                 | 7.00 for 7.30 pm      |
| Bee Alert Bee Walk                               | Nuttycombe Brewery,<br>Wiveliscombe | Sun. 18 June                 | 10.30 for 11.00 start |
| Langford Ladies: Talk on Staying Stronger Longer | Jubilee Hall                        | Wed. 21 June                 | 2.00 pm               |
| Friendship Circle:<br>Barbecue                   | Jubilee Hall—booking essential      | Fri. 30 June                 | 11.00 am - 4.00 pm    |
| Conservation Workgroup<br>Bracken bashing        | Heathfield: Poleshill layby         | Mon. 3 July                  | 10.00 am              |
| Friendship circle: Coffee & Chat                 | Jubilee Hall                        | Fri 14 July                  | 11.00 am - 12.30 pm   |
| Green Gardening Gp:<br>bring & share supper      | Chipleigh Mill Gardens              | Mon 17 July                  | tbc                   |

## Events Group - September Barn Dance

The events group enjoys support from the Parish Council and the Hall committee. It is made up of people who like making parish events happen and anyone can join. We meet in the pub and work together informally, following the lead of whoever feels most enthusiastic about a particular event. There has been a lot of Royalty inspired action in the last 12 months! Our next event will be a **Barn Dance on 23 September with Hopping Mad**. Tickets will be on sale from 1 August.

*Tryphena Huntingford on behalf of the group*

# Budvue Community Cinema

**Everything Everywhere All At Once** which was shown on a Sunday proved to be the strangest film I have ever seen. It won 7 Oscars but despite this, I can't even begin to describe it. Something of a 'marmite' film, it divided our audience.

Our summer season continues with **Empire of Light** on 17th June, back on our usual third Saturday in the month. Margate, England, 1980. As widespread unemployment and a rising wave of extremism plunge the seaside town and Margaret Thatcher's Britain into recession, depressed Hilary (Olivia Colman) sticks to her daily routine as the dutiful front-of-house manager at the Empire: a dying, golden-era movie palace. But movies can't keep lonely Hilary's inner demons at bay. And then, bright-eyed new employee Stephen (Michael Ward) suddenly enters the picture, shaking Hilary's troubled existence. Also appearing are Colin Firth and Toby Jones. It was directed by Sam Mendes who also wrote the script so it's bound to be thought provoking.



The schedule for the rest of the summer is:

17th June **Empire of Light**

15th July **The Whale**

19th August **The Fabelmans**

*Tim Wyatt*

**SAVE THE DATE!**  
 SATURDAY 23RD SEPTEMBER

**BARN DANCE**  
 WITH HOPPING MAD

AT THE JUBILEE HALL

TICKETS ON SALE FROM 1ST AUGUST. LIGHT SUPPER & SHARING PUDDING TABLE.

# News from the Villages

## Langford Budville Parish Council:

### Big Help Out

A part of the Coronation weekend was **The Big Help Out**. On the public holiday Monday, everyone was encouraged to **help out**: to give some of their time to help where it was needed within the parish. There were three efforts to support: a primrose planting scheme on the **Triangle**, painting fresh linseed oil on the church doors at **St Peter's's**, and clearing a large area of unwanted plants, weeds and vegetation at the **village school**.

All three events were successful. The Headmistress of the primary school, Carys Barnett, summed up just how effectively our community is coming together on a regular basis. In her email of thanks she said:

*"Thank you so very much, to you and the wonderful members of the Langford Budville community! I am so grateful to everyone who turned up to help today! What a wonderful community Langford Budville is!"*

Well deserved praise: it shows what impact we can all have when we work together.

### Parish Council members

Over the last 18 months there have been a number of personnel changes to your Parish Council, and so it is a good time to remind you who are your current representatives. These details will be added to the Parish website along with a photo of each. **Village Website Address:** <https://www.langford-budville.co.uk>

**Chairperson:** Derek Sowden – Derek is married and has lived in Langford Budville for just over 6 years. He has been supporting and watching Plymouth Argyle for 57 years. He is a retired bank Area Manager, and now works full time with his own handyman business.

### Councillors:

**Juliet Shrimpton** – Juliet moved to the village with her partner David, and son Thomas in 2017 from the Bath area. Juliet was part of the Greener Langford Budville team and worked mainly on the cycle path feasibility study. She is also a **Trustee of the Village Hall**. She has an environmental background and currently works in the offshore wind industry.

**Theresa Jacoby** – Theresa has lived in Wellisford - a lovely hamlet on the western edge of the Parish - for more than 20 years. Born and bred in Somerset, she has three nearly grown-up children, two at university and one in her last year at school. When not clearing up after them, she is a part-time bookkeeper.

**Will McFadzean** – Will and his wife relocated to Runnington from York in 2018, and since moving to the village they have welcomed two daughters. Both

Annabel and Will are vets working at a local specialist referral centre. When not working, the gym, gardening and house renovation take up any spare time!

**Fiona Barber** – Born and raised in London, Fiona lived and worked in South Oxfordshire before moving with her partner to Langford Budville in 2017. Fiona has retired from her nursing career and now spends her time running a small holiday let business.

**Parish Clerk – Helen Chadwick** - Helen was born and raised near Langford Budville, but now lives in Hatch Beauchamp. She worked as an accountant and finance director in the UK, Europe and the Far East before retiring in 2019. She now has a 12 acre smallholding with her partner Peter and works part-time for two parish councils, three charitable organisations and is a volunteer hospital driver.

We are all keen to work on behalf of our community, and we would be delighted for any of you to come along to the Parish Council meetings, and see how important we feel our community actually is.

*Derek Sowden: Chairperson. Langford Budville Parish Council*

## **Walking your dog in the countryside**

Somerset's rights of way (ROW) network provides us with thousands of kilometres of footpaths, bridleways and byways for walking. We are also incredibly lucky to have other great outdoor amenities on our doorsteps, such as Langford Heathfield. Unfortunately, some of the pleasure that's on offer is blighted by dog poo and there has been an increase in the number of complaints to the Parish Council regarding dog poo left on fields and footpaths.

Dog poo can be a major problem for both animal and human health, as well as being unpleasant. The risk, particularly to children, of toxocariasis and stomach upsets is relatively well known. However, parasites such as Neospora and Sarcocystis are found in some dog faeces and can cause abortion in pregnant cows and sheep. This is a result of faeces from infected dogs contaminating pasture which is eaten by grazing animals or fed as hay or silage.

Being a rural parish, this is also a good time of year to remind people that tick season is upon us, and that regular worm and parasite treatment is recommended for your dogs. Disease carried by ticks can cause severe sickness in some dogs. Specific advice for which anti-parasitic product to choose is best sought from your regular veterinary practice. Over the counter medications are often inexpensive, but may not provide full coverage against the current parasite species in common circulation. Consideration should also be given to the formulation, as some research suggests a link between spot-on treatments and pollution of water courses from dogs that enjoy swimming.

Please remember to keep dogs close to heel or on a lead, to stick to the marked footpaths and to always pick up your dog's poo!

*Will McFadzean (Parish Councillor and Vet)*



## *News from the Village Hall*

### **Langford Budville Jubilee Hall Trustees' Annual Report: May 2023**

This is the Annual Report for the Hall: do come to our **Annual General Meeting** on Monday 5 June at 7pm.

In the year to December 2022 the Hall returned to its pre-Covid levels of activity (with the assistance of a residual Covid business grant of £3,000) taking income to around £27,000 compared to 2020 (£19,000) and 2021 (£31,000). The Hall recorded a surplus of around £4,000 in the year compared to surpluses of £7,000 and £21,000 in the previous two years. However, the new floor cost £7,000 and this has been treated as an expense.

In addition to a busy typical week at the Hall most weekends are also booked up variously with workshops, childrens' parties, weddings and celebrations.

#### **Capital works**

During the year we have started a long-term capital and maintenance plan to help budget for resources going forward. Key considerations are:

- the likelihood of the new housing works progressing and hence the possibility of third-party contributions to outstanding capital works – particularly surfacing of outside hard spaces
- the need for additional storage
- feasibility of installation of renewable energy technologies to mitigate volatile electricity and heating oil costs.

In addition to laying the **new floor**, we completed improvements to drainage and repairs to the grout in the outside paving.

Current projects include paving over the courtyard area to provide more flexible outdoor space and replacing the flooring in the lobby area following flood damage in February.

#### **The housing development**

There has been very little communication with the developers of the new housing scheme adjacent to the hall since Spring 2021.

#### **Events**

**Café Plus** has taken place once a month over the last year. It is a really



popular way for residents to socialise. Particularly successful occasions were February's *Bikes and Babies* and April's *Complementary Health Fair*.

The major events since the Jubilee Barn Dance in 2022 have been the **Coronation Big Breakfast** and **Street Party** in early May. The Big Breakfast was combined with a Café Plus and live-streaming of the Coronation, and was very successful.

The introduction of fibre broadband to the Hall during 2022 opens up the possibility of more varied bookings. A very positive development is that a wider group of people than just Hall trustees are now meeting to discuss and agree events.

### **Other initiatives**

During the year we initiated a **Community Fund** for grants of up to £100 for each application, which is administered within the Hall accounting system but accessed with oversight from the Parish Council and an independent resident. To date there have been three applications and two have been approved – firstly to buy a wildlife camera and secondly, to help kick start a Baby and Toddler group. The Community Fund has been resourced from surpluses from the Pop Up shop and Café Plus.

This year we hope to implement booking software which should help to reduce the administrative load on the Booking Clerk and Treasurer.

### **Trustees, key holders and helpers**

During the year Zenah Rowe stood down as a Trustee. Zenah was one of the most longstanding Trustees and contributed a great deal during her time at the Hall. She continues to be involved – securing bike stands from a charity and acting as barperson for Jazz nights. We are really pleased to welcome Dom Lloyd and Fiona Barber as new Trustees and Fiona has kindly agreed to take over from Margaret Brown as Hall Secretary. Margaret will continue as Booking Clerk.

Steve Care has ceased his garden maintenance business and we are now supported by Charlie Roffe-Sylvester of Wiveliscombe for grounds maintenance.

We cannot operate without our trustees, key holders and supporting staff. I am really grateful to all of them and also to Rosina our cleaner. I am also very grateful to Keith Moore who continues to provide support on a wide range of matters.

*Michael Huntingford, Chairperson, Jubilee Hall Trustees. 19 May 2023*

**The Jubilee Hall is an ideal venue for a wide variety of events including wedding receptions, parties, shows and concerts, club and society meetings, conferences & training days, with state of the art sound and projection, and High speed broadband.**  
**For more information and booking availability go to [www.lbjubileehall.com](http://www.lbjubileehall.com)**



# Coronation weekend

## Community Celebrations

A lot of work from many villagers went into decorating the hall with bunting, balloons and patriotic tablecloths as well as providing plenty of good food. The results were well-worth the effort as can be seen in the photos. On Saturday, the **Big Breakfast** was busy from 8.30 with the last breakfasts served just in time for the start of the Coronation Service proper: a chance for the cooks and servers to sit down.



Collectively watching the service was quite special with the loud buzz of conversation naturally falling to silence in the hall. Coffee and cakes, as well as prosecco and savoury nibbles, were all employed to toast the new King. Thank you to all those who contributed in many and various ways to produce a great atmosphere, especially to Heather Cottrell and her team who served 70 Full English Breakfasts—every one of them delicious! Although nobody counted, approximately 100 people came up to the hall on Saturday morning.

On Saturday afternoon, the sound of **St Peter's church bells** marked the occasion with aplomb and they could be heard again in the main street on Sunday following Holy Communion, as we were setting up the tables for the shared lunch. The weather was mild and still, which made it possible to be outside without the risk of sunburn and kept the fabulous collection of donated puddings and cakes in excellent condition. Eighteen tables from the Jubilee Hall lined the street, with the diners wearing an amusing array of crowns and hats. It was a plus to have beer on tap from The Martlet so nearby! Also, thanks to the team from the pub for their gift of lemon pavlova to share. Some extra diversions were provided by **Mölkky**, a sort of movable skittles, and also by a **swarm of bees** spotted by the Eland brothers.



For those with endless energy, there was **cricket on the Triangle**... A motley crew of a dozen or more amateurs and a couple of professional standard youngsters (Nat, Rex) assembled at the Triangle-Oval. Umpire Ian had his counting stones and the onlooking crowd were in silent awe of the skills displayed.

The sun came out and the play hotted-up with the ball reaching the scrub across the road on one or two occasions. Much fun was had and an intrepid few made it to the pub on the way home.

Thanks to all who came to any or all of the events. We hope that it will be a good few years until the next Coronation, so there will have to be an alternative way to organise the cricket rematch!



*Tryphena Huntingford and Tim Dyer*

## ***Coronation big Help-out***

### **Tidying up at our School:**

On the **Big Help Out** day around a dozen parishioners, pupils, parents and staff assembled at our little primary school to give its outside space a spring clean. We weeded flower beds, dismantled an old shed, trailered away trash, cleared the wildlife pond and jet-washed the flagstones, fuelled by coffee, tea and Francis & Aubrey's fantastic family cake! Thanks to all who helped.



*Josh Wedderkopp*

### **Weather-proofing the Church doors**

A working party of half a dozen turned up at **St Peter's, Langford Budville**, at the King's command. His majesty was ably represented by Lyn Wyatt who split us into smaller groups to tidy up and oil the church's three outside doors.

The porch door on the South side of the nave has slats, which exposes the inner door to the weather. That makes them both eligible for linseed. The other door is the narthex door. The narthex is the vestibule, located at the west end of the nave, opposite the altar.

The King's duty done, we enjoyed a cup of coffee, thanks to the foresight of Lyn. A smaller party returned a few days later to apply second coats. Job done.



*Charlie Jacoby*

## *Coronation big Help-out*

### **Primrose planting on the Triangle**

A group of about ten parishioners, including the Eland Boys, turned up at the triangle armed with trowels and primroses to set out a floral border to mark the edge of the wildflower area.

The rain held off long enough to get all the plants into the ground. A few more have been added subsequently, and next spring we should have a grand display of yellow primroses!

*Saranne Cessford.*



## *Coronation Hive*

As we had just finished a very pleasant meal at the street party on coronation Sunday, three very excited boys arrived on their bicycles announcing that there was a swarm of bees up in the hedge near the triangle.

Sarah and I went to look, to find a good sized swarm which was easy to access. After collecting our suits and equipment we returned, cut the twigs that the swarm was hanging on and lowered most of the bees into a cardboard box. The swarm is formed around the queen bee, so as long as she is in the box the remaining bees will follow her, attracted in by pheromones.

A swarm is the natural way bees form a new colony, occurring when a colony gets too big. The queen leaves the hive with about half the bees as a swarm, carrying enough food to live for several days while they find a new home. Meanwhile inside the original hive a new queen has been reared to take on the old colony.

Our swarm has been transferred from the box into an empty hive at Chipley Mill, now known as the **Coronation Bees**. A great memory of a celebratory weekend, with hopefully some honey in the future.

Well done lads: beekeepers are always pleased to hear about a swarm.

*Roger Milsom*





# Farewell and Welcome

## **Farewell to Mike Blake**

**30 April 1942 to 12 April 2023**

Michael George Blake was born in Corsham, Wilts, and grew up in Portishead. He and his brothers were all obsessed with cars and motorbikes. At about 16 Mike secured an apprenticeship with a Ford Dealer - a school of hard knocks, but he loved it, especially travelling the UK delivering brand new cars.



Mike loved cars and he loved speed: he bought a mini and souped it up, racing it at Castle Coombe. He would smash up the car, take it home and spend hours rebuilding it, and then do it all again the next week!

After completing his apprenticeship, Mike worked for several other dealerships, gaining experience and eventually became head mechanic in Nailsea, where he met Maggie, who had just returned from two years in Australia. Mike and Maggie courted for five years, and married in 1978, setting up home in Nailsea. Mike sacrificed his beloved new Ford for the deposit on the house.

He and Maggie had long wanted to buy and renovate an old property and in 1986 they found Ivy cottage in Kewstoke. Over 16 years they modernised and extended the property creating a garden of more than an acre. Hard work, but fun.

In 2002 they decided it was time to look for a new, less demanding, family home, and bought the house in Langford Budville. Mike was delighted to find he was living opposite the pub, and along with the first of their several rescue dogs they slipped seamlessly into village life. Sadly, Mike was diagnosed in 2022 with Parkinsons - but he never complained, and kept on doing what he could to keep the beast at bay.

Maggie says "*Mike was a wonderful husband and a lovely man. He was kind, funny and always cheerful!*". He will be much missed by his many friends in the village, and at the Grumpy Old Men's table at the pub.

*Saranne Cessford with Maggie Blake*

## **Welcome to the Davies Family**

Welcome to Tamsin, James, Nola (9) and Toby (7) Davies, who have recently moved into Courtlands.

Tamsin writes "*Hello from the Davies family. We moved into the Village this winter. We love the walks, the park, White Post and the pub! We have already met some lovely people, and definitely feel like we've landed on our feet here. Thank you, lovely Langford Budville.*"

Please make them welcome! *Lauren Farrar.*

# Green Gardening Group

Our talk this month, on 15th May, was from Piers Langdon from **Action Ethiopia**. It was a fascinating insight into the difference to people's lives that the charity is able to make. A relatively small adjustment in the farming practices can tip the balance between sustainable and non-sustainable food production. Piers was such a knowledgeable and relaxed speaker and it was so heartening to hear for once about successful responses to climate change.

Thanks to the large number of plants brought in and the generous donations we were able to double our normal speakers fee as a gift to the charity. We had a surplus of lovely plants, including peppers, cucumbers, gherkins, tomatoes and chillies.

Pam Langton has a large amount of bamboo in different sizes that she is kindly offering to anyone who would like some. Keep those bean sticks local! Please email Pam on [pmlangton49@icloud.com](mailto:pmlangton49@icloud.com) if you are interested.

Tryphena and Michael are hosting **Open Physic Field** every Saturday afternoon in June at **Harpford Herb Farm**, from 2.00 to 5.00 pm. Herb teas; guided tours; Ice Cream!

Our next meeting is on the **17th July**, which will be a social evening at **Chipleigh Mill** with a bring and share supper. More details will follow in early July.

*Jackie Milsom*



## Cafe Plus

Café Plus will be taking a break over the summer but back again in September. We have table tennis, the Wellington Repair Café and a Christmas Fair all lined up. However, if there is anything you would like to showcase, organise or enjoy along with the Café please do let us know and we can try to make it happen. Our most surprising recent "plus" was Electric Bikes and Babies but it still worked, with interest for Kings Cycles and a potential new baby group. Coffee and cake somehow seem to make all sorts of things more possible.

We had a lovely image in our heads of serving coffee out of a van at the Jubilee Wood for the drone photo but decided the logistics were beyond us! The plan is now to bring your own drinks to go with the cake that has been promised. A couple more baked gifts would also be welcome.

Since starting last September, we have made a small profit with £250 going into the Community Fund. Many thanks to all the cake makers and those who volunteer at the café.

Looking forward to the Autumn!

*Café Plus team - Sarah Warner, Ali Eland, Jane Hancock and Tryphena  
Huntingford plus numerous volunteers*

# Tree felling on the Common

**Ash Dieback** is a fungal disease originating in Asia, which arrived in the UK in 2012, and spread rapidly across the country. It was first identified in Langford Heathfield in 2016. It is predicted that it will affect the majority of Ash in the UK within 15 years, with only 1 - 5% surviving. Ash make up 12% of all trees in UK woodlands and in parks and hedgerows, so the impact will be significant.

**Somerset Wildlife Trust's** policy, in line with advice, is to leave all ash trees, even the diseased ones, unless they represent a significant Health and Safety risk. We are therefore implementing an H&S felling program to fell infected trees alongside roads, buildings, public rights of way etc. It is estimated that, across the County, this will cost SWT around £600k.

The disease causes the branches of infected trees to rapidly become very brittle as they die, which makes safe felling very difficult: there is a high risk of a branch breaking high up and falling on the chainsaw operator below. As a result the advice is to fell infected trees as soon as possible: the longer you wait the more dangerous it becomes. The work is difficult, dangerous and ecologically damaging as well as expensive. However, due to the H&S implications we have no choice but to fell trees in high risk areas.

At Langford Heathfield we are several years into this felling program and have now felled most of the infected ash adjacent to **Carriers Lane**, the **Wiveliscombe road** and many of the **major internal paths and trails**. Due to the size of some of the trees involved, this work unfortunately creates a mess, and as it is alongside roads and paths it is highly visible.

Due to constraints around breeding birds, bats and the **SSSI status** we can only fell during the winter months which are also the wettest months. Given the size of the tractors and forwarders that have to be used when dealing with such large trees, this inevitably leads to some rutting of the ground. As soon as the ground dries out sufficiently the remaining felled trees and timber will be extracted and a mini digger will be used to level the ruts. If this is done while the ground is still wet there'll be more damage - and more mud on the road, making it dangerous to traffic.

Apart from a few oak grown on by volunteers in the village from acorns collected from the reserve a couple of years ago, we will not be replanting. The reserve has a good mix of other tree species, oak, hazel, birch, willow etc and these will naturally regenerate in the areas cleared of ash. They will be protected from browsing by roe deer by the bramble that will grow and the brush that we leave laying around. This looks messy to some people, but it protects the regenerating tree seedlings and provides valuable habitat to many small mammals, birds and invertebrates.

We are now coming to the end of the felling programme and over the next couple of winters we plan to fell the remaining infected ash in the high risk areas. Although this work may cause some disruption I hope that it won't be on the scale of last winter's work.

*David Northcote-Wright: Snr Reserves Manager W. Somerset & Blackdowns.*

# Conservation Group

## Jubilee Wood Drone Photograph: Sunday 11 June, 11.00am

If you were involved in the planting or would like to support the project, please come along for an hour or so to wave at the drone camera and to check how the trees are doing. Marie Berry has kindly offered lots of fleece to be spread for mulch and you could perhaps bring a small hammer to peg down a few mulch mats as well. A large version of the photo will be put up in the village hall and on a noticeboard on site to commemorate the planting. Surely you and your children/grandchildren should be in it. Park at the Langford Lakes Christmas Tree Farm car park. Bringing a bottle of something fizzy might make the day even more effervescent.

Many thanks to Nick Girone-Maddocks for operating the drone and of course to the Hendy family without whose involvement the wood would not be there.

*Ian Loudon*

## Bee Alert, Bee Walk: Sunday 18 June, 10.30 for 11.00 am

The Bee Walk sets off at 11.00 am (**or 10.30 for children's face painting**) from the Nuttycombe Brewery in Wiveliscombe, with staging posts at Milverton Cricket Club (from about 12.30 to 1.30pm) and the Triangle in Langford Budville (from about 3 to 3.45pm) with Fox's Field in Wellington as the finish. Here Anita Roy will give us a guided tour of the impressive Forest Garden which Transition Town Wellington is creating.

This is serious fun to remind people of the emergencies in climate and nature and as we know, NO NATURE, NO FUTURE. Children of all ages will be the main focus with mini-workshops, hand stamps and distance medals linked to bumblebees.

At Milverton, Hannah Montag will be making mini-bees out of fir cones and on the Triangle, Trevor Phelps will demonstrate **bee/bug hotels**. Please join the walk at any point. Bring phones to record any wildlife or plants of interest, ideally using the **Seek** app.

The more we know about how many are coming, the more smoothly the event will run, so if interested and not signed up yet please join on Eventbrite (find this in the Events page of the Somerset Wildlife Trust website) or just let me know: [ifloudon@googlemail.com](mailto:ifloudon@googlemail.com)



Bee illustrations from **Friends of the Earth** web page: Left to right Common Carder Bee; White-tailed Bumblebee; Honeybee; Dark-edged BeeFly. You can order a Bee Saver Kit from them which includes the ID Guide.



# Wellbeing: Herbs for creams

There are many herbs used effectively in creams: here are just three commonly used ingredients.

**Calendula**, *Calendula officinalis*, (also sometimes called pot marigold) is an ingredient in salves available in mainstream chemists or health-food shops. Its healing effects are so wide-ranging that Wellede make a cream with it called "Skin food"! Calendula is anti-microbial, anti-inflammatory and stops bleeding. Calendula flowers are one of several plants that you can use to quickly sort out a cut in the garden: yarrow leaves and plantain will also work straightaway to stop bleeding.



I use an extract of **conkers** in a cream to relieve the eczema that is so common on the lower legs of elderly folk, whose veins are starting to underperform. It quickly removes the itch and repairs the skin. The fruit of the **horse chestnut tree**, *Aesculus hippocastanum*, has far wider uses than playing conkers.



**Chickweed** (*Stellaria media*) is probably the most familiar anti-itch herb and can be taken internally or in a cream to counter random itches. The fresh juice is particularly effective. It has a lettuce-y taste and I've eaten it in a mixed salad at River Cottage Kitchen in Axminster! There is plenty growing wild around here, particularly when it is warm and damp. Don't pick it anywhere near footpaths or in fields with stock to avoid bacterial contamination.



Tryphena Huntingford



SALCOMBE  
DAIRY

will be at Harpford Farm.....

An advertisement for an event at Harpford Farm. The background is a photograph of a field with a wooden sign that reads "Harpford Farm". The text is overlaid on the image.

**Physic Field Open in June**  
**Saturdays 2-5pm**  
at Harpford Farm  
Teas and ice-cream      Guided tours  
[www.harpfordherbs.co.uk](http://www.harpfordherbs.co.uk)

# Flooding at Chipley

I've been in Chipley since 2014 and this is the worst flood event I've seen here so far. On Tuesday 9<sup>th</sup> May, after a dry morning, we had a few hours of intense rain. By 3pm the road was flooded and deemed impassable to all but cocky 4x4 drivers and tractors (about 2 feet deep). Normally Chipley floods with water running down from the Milverton direction where a stream regularly bursts out of its culvert under the road to flow down the hill. This time the stream from Bindon was flooding over the fence into the road as well, and where the two masses of water met I witnessed a bore running - but not big enough to surf! By 5pm the road was fully passable again with just a large patch of rubble remaining on the corner to show what had happened.



If you're caught by an event such as this on a small stream it's best to park and wait rather than risk swamping your car and putting yourself in danger. Floods on small catchment streams such as at Chipley will subside quite quickly.

Tim Dyer

**Open Garden**  
Kittisford  
Greater Brimley Farm, Springers, Kittisford Glebe TA21 0SA  
**Sunday 11th June 2 - 6pm**  
Live music: Honest John 3-5pm  
Teas | Plants | Raffle  
Admission Adults **£5.00**  
Children under 16 **FREE**  
All proceeds in aid of  
Ukraine and Kittisford Church

Invitation to  
Open Garden  
at  
Kittisford

Greater Brimley  
Farm,  
Springers,  
Kittisford Glebe  
TA21 0SA

All proceeds in aid  
of Ukraine &  
Kittisford Church

## Langford Ladies

A few Langford Ladies went looking for bluebells at Tolland. We had a lovely walk, and although the bluebells were a little past their peak they were still lovely. We explored the church at Tolland, and enjoyed a delicious cake courtesy of Jill Seddon, who organised the day - thank you Jill.



Jill is also organising next month's meeting: on Wednesday 21 June we will meet at the Jubilee Hall at 2.00 pm, when Charlotte Norman, who is Development Officer for the women's initiative '**IN IT TOGETHER**', will talk to us for about half an hour. She will discuss activities to keep us stronger for longer and ways of getting active that may be right for you. After the talk she'll do a gentle movement session - no need for Jane Fonda outfits, just comfortable clothing. Please put it in your calendar, and let Jill know if you can make it. (Please note that this is another **afternoon meeting!**)

Jill Seddon: [jillseddon@outlook.com](mailto:jillseddon@outlook.com)

## Friendship Circle



In late March, Ray Budd came to give us a very entertaining talk on his life as a driving examiner. He told us a bit about the history of the test which was introduced in the UK in 1935 because there were too many accidents! In the early days, there were no test centres, so examiners had to travel a lot. Ray became an instructor of examiners, then eventually a supervisor. He also worked in Indonesia, advising on and watching tests.

The April meetings were a coffee & chat with hot cross buns for Easter and a trip to Salisbury where members were free to "do their own thing", some visiting the Cathedral, Mompesson House, shopping, eating, etc. Unfortunately, there was some rain, but it didn't dampen spirits!

On May 5th we had our **Coronation meeting** with nibbles, Prosecco or Nosecco and a fun quiz about people called Charles or Charlie. The last May meeting was a coffee & chat which 40 members attended.

The next meetings are:

- 2nd June - Ploughman's lunch in the hall
- 16th June - Trip to Dartmouth (meet 9.15 in hall car park)
- 30th June - BBQ - Booking essential, cost £5.00 per person
- 14th July - Coffee and Chat
- 28th July - AGM

All the above meetings 11 - 12.30 in the Jubilee Hall (unless otherwise stated).  
The £2 entry includes one raffle ticket.

*Pam Farr/ Barbara Hughes*

# Seasonal Treats: Tabouleh

Tabouleh is a traditional middle-eastern dish. As I understand it varies from household to household, which gives me permission to suggest my recipe without declaring it the to be only way! The key ingredients are bulgur wheat, parsley and lemon which, whatever the proportions, will provide a refreshing salad which can be served as a starter or side-dish. It's perfect for this time of year when fresh herbs are so fast-growing. I have spare fresh mint on the herb field which I am happy to share.

## Ingredients

- 100g bulgur wheat
- 100g or a very large bunch parsley (curly or flat)
- 100g or very large bunch mint
- 3 small ripe tomatoes
- **Choice of onion.** In order of taste intensity: one small red onion, 3 spring onions, a small handful of chives
- **Dressing:** juice of a ripe lemon, equal volume of olive oil, teaspoon of salt, fresh black pepper.



## Method

- Soak bulgur wheat for **two hours**. Use a large bowl and cover the grains with at least three times the volume of water to dry grains. It will expand considerably.
- Line a colander with a clean tea towel and drain the grains onto the towel. Gather up the corners of the tea towel and ring out the grains within the towel to remove as much water as possible.
- Chop all the fresh ingredients as finely as possible.
- Combine the chopped herbs, tomato, onion and bulgur wheat in a large bowl and thoroughly mix.
- Make the dressing by whisking all the dressing ingredients lightly together.
- Stir the dressing into the salad and adjust the seasoning to suit. You may need another lemon if the first wasn't very juicy.
- Serve with lettuce or flat bread as a starter or as part of a salad meal.

*Tryphena Huntingford*



## Green Fingers: Favourite things...



Our favourite fruit tree in the garden is **crab apple 'Golden Hornet'**. Pale pink blossom, beloved of bees, and masses of yellow crab apples which make a wonderful pink jelly. Our favourite vegetable is **climbing french bean 'Blue Lake'**: abundant crop of tender 'squeaky beans' with a good flavour that freeze well. **Keith Moore**



So much we love but **golden beetroot** is a favourite with us: it has the taste of beetroot but is sweeter and less earthy. We love it raw, cooked and pickled. **Jackie Milsom**

I love **wild strawberries** - they're like mini garden gems. Raspberries are bigger and tastier, but there's a little magic in the wild strawberry! **Josh Wedderkopp**

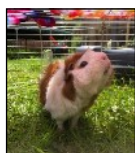
**Marshall's Dwarf Green Curled Kale** - Snail and caterpillar proof and will last all winter if you keep picking the leaves. Boil, steam or sprinkle with oil and put in a hot oven for a few mins til crispy. Sprinkled with Chinese 5 spice it makes a pretty good 'Chinese seaweed'. When it goes to seed in the spring the flower heads can be used like sprouting broccoli. Deliciously tender. **Sarah Warner**



The **coloured varieties of runner beans**, they are easy to find when picking! **Tryphena Huntingford**

**Aquadulce Claudia broad beans**. Sown in Autumn they make use of the garden when not much else grows, hardy to rogue frosts and snow and produce delicious broad beans in April leaving the patch free for other beans in the summer. Also, they don't suffer from black fly as much as the spring sowing varieties! **Fiona Barber**

I love growing **herbs** as they are expensive to buy and often have too much packaging. My favourite is **parsley**, plain flat-leaved or moss curled, both perfect in a Lebanese tabbouleh! **Theresa Jacoby**



**Spinach** because I love the fact that the more you pick the more it keeps on giving. Our Guinea pigs share our harvest with us: they are not at all fussy when thrown a caterpillar-munched lower leaf or two. **Juliette Wedderkopp**



# LANGFORD LAKES

Local Family Run  
**Christmas Tree Farm**  
set in the heart of rural  
Somerset

Call us on **01823 400476** or visit **www.langfordlakes.co.uk**

# News from the Churches

## Church Services Rota

Readings on Pew Sheets

<https://www.churchtimes.co.uk/faith/sunday-s-readings>

| Date                                | Langford Budville               | Runnington                      | Thorne St Margaret          |
|-------------------------------------|---------------------------------|---------------------------------|-----------------------------|
| Sun 4 June<br><b>Trinity Sunday</b> | 11.00 am Holy Communion service | Join Langford                   | 6.00 pm Evensong in church  |
| Sun 11 June                         | Join Runnington                 | 11.00 am Lay-led service        | Join Sampford or Runnington |
| Sun 18 June                         | No Service                      | No Service                      | 9.00 am Holy                |
| Sun 25 June                         | Join Runnington                 | 10.00 am Holy Communion service | Join Sampford/Runnington    |

### Church Contacts:

**East Group with Sampford Arundel and Thorne St Margaret:** Church contact: Revd Alan Ellacott—01823 669824

**Interim Team Rector:** Martin Kirkbride 01823 400127

**Parish Office** phone number: 01823 665254 (leave a message):  
email: [stjohns.wellington@gmail.com](mailto:stjohns.wellington@gmail.com)

**Benefice Mid-week Holy Communion** BCP are held every Thursday at 10.00 am at St Johns Wellington.

**Open The Book** Our friendly Open the Book team is looking for helpers to take Bible stories into our schools. If you're interested call Jackie on 01823 666652

**Open Door** is a local charity providing a day centre for people who are homeless and sleeping rough, including those in our rural areas. Our organisation was set up by local churches 20 years ago and retains a strong support from churches and schools in and around Taunton. <https://www.tauntonopendoor.org.uk/news/>

**Foodbank:** If you know of anyone who might be interested, please let them know. Steve Jenkins is now a Foodbank Trustee for Wellington. Pastor Steve Jenkins. Tel: 01823 665622 Mob 07740 555105

# Notes from St Peter's

A list of 'thank you's': To **Keith Moore** for repairing and refurbishing our church notice board - it looks superb. Also to **Anthony Knight** who came and played his violin to the congregation on the Sunday of Coronation Weekend. He played beautifully and raised £160 for Ukraine. His aim is to visit every church in the Diocese and by the time he came to Langford Budville he had already raised over £8000.

We also need to thank our **bell-ringers** who not only rang for the Coronation but also on the day after for our monthly Sunday service. More thank yous to the volunteers who came along on Coronation Monday and did sterling work applying linseed oil to all the outside doors of the church - a much needed task helping to preserve our building.

And finally, to Saranne Cessford who has masterminded Round About for the last few years, and who was chief pancake maker for the annual Friends fund raiser on Shrove Tuesday. She will be leaving us this summer - you will be missed, Saranne.

*Sarah Nutt*

**Standard Bearers at St Peter's for John Randle's Memorial Service** on 15 April:  
Left to right

Far East Devon Standing Regiment  
Devon and Exeter Regimental Anniversary  
Royal British Legion, Wellington  
Devon and Dorset, Exeter branch

Photo: *Laurian Cooper*



# News from Runnington Church

The day of the Coronation saw the Runnington church bells rung at 3 pm, and the **Big Help Out** on the Monday afterwards saw some long overdue clearance of ash and elder seedling roots in the churchyard, alongside some tidying up around the church porch and churchyard boundary. The bench along the south wall of the church is now back in place following repair.

From now on our HC service on the fourth Sunday of each month will be at 10am. Hopefully the change from the earlier time of 9am will be attractive to those who prefer a slightly later Sunday morning arising !

*John Houghton*



# Our School:

It has certainly been a busy and productive few months, here at Langford Budville. We have seen the successful installation of the **Sensory Room**, which is also home to our new and improved library. It has been wonderful to observe the children using this room, to support them to readily access their learning. We are also delighted to share that the **trim trial** for the playground is going to be erected during the half term break, and this is going to really enhance the active play opportunities for the children.

I have been overwhelmed by the support and kindness shown, by the local community since the Moorland Federation have been leading and supporting Langford Budville CoE Primary School. This was especially evident during **'The Big Help Out'**, earlier this month. In just one morning, thanks to the many hands, we disassembled a very old shed, cleared out the pond and did lots and lots of weeding! Thank you so very much, to everyone who came to help!

The Moorland Federation are delighted to announce that a permanent Head of School has been appointed for Langford Budville. From September **Mr Moise-Souch**, who currently works at a school in Tiverton, is very excited to be joining our wonderful school. I am remaining within the Federation, as a leader in another school, and I am delighted that I will have opportunities to work collaboratively with the school. I am remaining as the Head of School, of Langford Budville, until August and the team and I are steadfast in achieving more great things for the school.

*Carys Barnett (Interim Head of School) / Josh Wedderkopp (LOtC & Forest School teacher): School office - 400483*

## School Coronation Flag

Orchid class have been delighted by all the support given by the local community over the King's Coronation weekend. Our **'Rag Flag'** was looking rather sad as we had run out of blue material. No fear! Langford delivered! We had multiple bags of material on our doorstep the next morning which had been donated by some mysterious Langford Super Heroes. We were able to complete our art work and it is sitting proudly on our school fence. Thank you to all our mysterious donators.

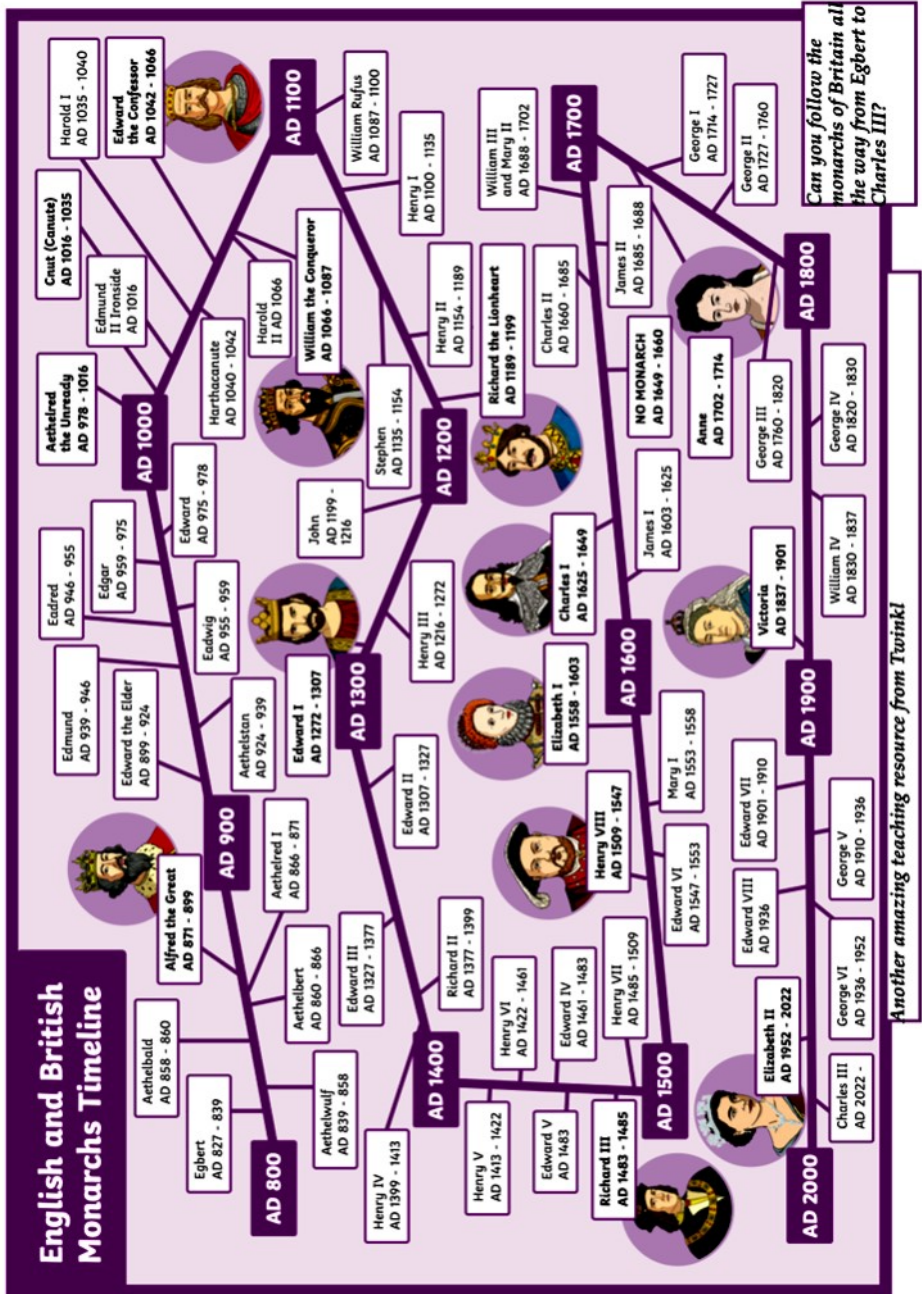
We also came back after the weekend to a lovely clear outside area so we would also like to extend our gratitude to all those involved in the **'Big Help Out'**.

'From Bella Combes and Orchid Class at LB Primary School:





# Young Buddies - Monarchs



# Langford Budville Baby & Toddler Group

Come and Join us in trialling a **NEW** Baby and Toddler Group to be held on Monday mornings from 10.00 am until 12 noon in the Jubilee Hall during June and July on the following dates:

Mon. 5, 12 and 26 June

Monday 3, 10, 17 and 31 July

*Note: Due to prior bookings not every Monday morning was available.*

Cost £2.00/ child, with subsequent children £1.00

All are welcome. Plenty of on-site parking.

Tea, coffee and biscuits provided

Donations of items for use in the Group, like toys, activities and games) will be gratefully accepted!

Fb group—follow & share: Langford Budville Baby and Toddler Group.

Questions and further information: Rachael on 07771 658312.



**A.J. WAYGOOD**  
**PAINTER & DECORATOR**

FREE QUOTATIONS  
ALL ASPECTS OF DECORATING  
FRIENDLY & RELIABLE

 [www.waygooddecorating.com](http://www.waygooddecorating.com)  
Checkatrade.com  
Where reputation matters

TEL: **07552445388**  
EMAIL: [AJWAYGOOD@HOTMAIL.COM](mailto:ajwaygood@hotmail.com)  
WEB: [WWW.WAYGOODDECORATING.COM](http://WWW.WAYGOODDECORATING.COM)

## TGF PLASTERING



**CALL ON 07717 413 239**

QUICK, CLEAN AND  
PROFESSIONAL SERVICE

ALL ASPECTS UNDERTAKEN

FIND US ON FACEBOOK

# H Tredwin & Son Ltd

Funeral Directors

15 & 17 North Street, Wellington



Providing Wellington and the surrounding parishes with a proficient, personal and caring service at **all** times

Private chapels of rest  
Pre-paid funeral plans

Contact Nick or Louise Tredwin  
Telephone 01823 672287

# ASHCULME

07815146343  
info@ashculme.co.uk

# NPTC

Part of the City & Guilds Group

**QUALIFIED  
WORKFORCE**

## ALL TREE WORK UNDERTAKEN

- *Removals / Crown Reductions & Lifting / Deadwooding & More*

## STUMP REMOVAL

## GARDEN CLEARANCE WORK

## LANDSCAPING

## HEDGE REMOVAL & MAINTENANCE

Residential & Commercial  
work undertaken by our  
fully insured & qualified  
workforce

Emergency Call Outs 24/7 - Paul Durman - 07815146343

Email: [info@aefloorcleaning.co.uk](mailto:info@aefloorcleaning.co.uk)

Tel: 01823 665627



**AE FLOOR CLEANING**

**Hard Floor Cleaning Specialists**  
**Fully Insured, Certified & Experienced**

**Domestic & Commercial**

[www.aefloorcleaning.co.uk](http://www.aefloorcleaning.co.uk)

## **BUILDER**

# **ALBY ANDERSON**

A friendly self-employed, multi-skilled builder with 25 years experience

No job too small

References available on request.

07778 842752

[albykiwi@gmail.com](mailto:albykiwi@gmail.com)

*Fursdons, Langford Budville, Wellington, Somerset, TA21 0QX*

# JON CLARK CHIMNEY SWEEP



Chimney Sweeping



Bird Guards & Cows Fitted



Wood Burning Stove Installations



HETAS approved



Over 13 years experience



Insurance recognised certificates issued



Member of Sweep Safe



Camera surveys



01823 430 200 / 07976 950 347



jon.clark01@btconnect.com

[www.jonclark-chimneysweep.co.uk](http://www.jonclark-chimneysweep.co.uk)



## SEAN REEVES

ELECTRICAL SERVICES

01823 400324 • 07710 618892

Little Pippins, Langford Budville, Wellington

Somerset TA21 0RD

sean.a.reeves@hotmail.co.uk

Electrical Safety Register

incorporating





**Ormerod  
Electrical  
LIMITED**



01984 568589

07855 064189

[www.ormerodelectrical.co.uk](http://www.ormerodelectrical.co.uk)



Domestic and Commercial Electrical Services  
and Contractors

## HARVEY AND WADE<sup>LTD</sup>

**Bespoke Fitted Kitchen Furniture**  
(Craftsmanship/Unique/Inspirational/Timeless)

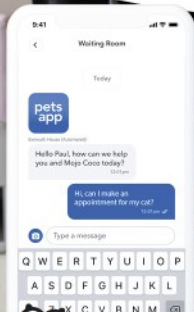
**All Made in the UK**  
**Complete Project Management**  
**Bespoke Design Package**  
**Full Installation Service**

**Showroom in Honiton:**  
**38 High Street, Honiton, Devon, EX14 1PJ - 01404 41655**  
**Website: [www.harveyandwade.co.uk](http://www.harveyandwade.co.uk)**  
**Email: [sales@harveyandwade.co.uk](mailto:sales@harveyandwade.co.uk)**





We're now on PetsApp!  
Request appointments, reorder prescriptions,  
ask us a question or pay your invoice!



- RCVS Approved Veterinary Hospital
- Dedicated 24/7 Emergency Service
- Post-graduate qualifications in Ophthalmology, Medicine, Soft Tissue Surgery & Orthopaedics



Wellington & Wiveliscombe Tel: 01823 662286

9 Mantle Street, Wellington, TA21 8AR

**01823 618921**

## Carpets Curtains Beds & Blinds

Carpet ● Sheet Vinyl ● Karndean ● Laminate  
● Remnants ● Solid & Engineered Wood

All can be expertly installed by our team of experienced fitters giving you the best possible lasting results.

Curtains & Blinds made to measure from our extensive range of fabric designs.

Large selection of voiles, tracks & poles to order.

C&C's dedicated bed showroom, offering you a wide range of bed bases, mattresses & headboards all available in various sizes.

*Come and see what we can do for you*

candccarpets@hotmail.co.uk

find us on

candchome.co.uk

# Community Contacts

| <b>Parish Council</b>  |                       |  |
|--|-----------------------|--|
| Chairperson  | Derek Sowden          | dereksowden@hotmail.com  |
|  | Juliet Shrimpton      | julietlbpc@gmail.com   |
|  | Theresa Jacoby        | tmbjacoby@gmail.com  |
|  | Will McFadzean        | will.macfadzean@gmail.com                                      |
|  | Fiona Barber          |  |
| Parish Clerk   | Helen Chadwick        | langfordbudvillepc@gmail.com                                   |
| <b>Churches</b>  |                       |  |
| Team Vicar   | The Rev Alan Ellacott | 01823 669824<br>rev.aellacott1969@btinternet.com               |
| <b>Church Contacts</b>                                       |                       |  |
| Langford Budville Church warden                              | Lyn Wyatt             | 01823 400245<br>lynwyatt1950@gmail.com                         |
| Runnington Church Wardens                                    | John Houghton         | 01823 661323   |
|  | Michael Huntingford   | mhuntingford@zcmarine.co.uk<br>01823 672717                    |
| <b>Jubilee Hall</b>  |                       |  |
| Chairman   | Michael Huntingford   | mhuntingford@zcmarine.co.uk<br>01823 672717                    |
| Vice Chairman  | Andy Pritchard        | Pritchard.family2@btopenworld.com                              |
| Secretary  | Fiona Barber          | fionabarber40@hotmail.com                                      |
| Treasurer  | Mike Grabham          |  |
| <b>Booking enquiries</b>                                     |                       | www.lbjubileehall.com  |
| <b>Primary School</b>  |                       |  |
| Head Teacher   | Carys Barnet          | 01823 400483<br>langfordbudville@educ.somerset.gov.uk          |
| <b>Police</b>  |                       |  |
| Beat Officers<br>Tel: 101 Crime recording<br>999 Emergencies | PCSO Vicky Henderson  | Victoria.Henderson@avonandsomerset.police.uk tel: 07889 655302 |
|  | PCSO Louise Fyne 6945 | Tel: 07889 659476  |

**Jubilee Hall Website:** [www.lbjubileehall.com](http://www.lbjubileehall.com)

**Village Web site:** [www.langford-budville.co.uk](http://www.langford-budville.co.uk)

**Greener Langford Budville team:** [www.greenerlangfordbudville.com](http://www.greenerlangfordbudville.com)

**Village Agent (Somerset RCC)** Elaine Gardner: [elaineg@somersetccc.org.uk](mailto:elaineg@somersetccc.org.uk)

**Round About Magazine;** [lbr.roundabout@gmail.com](mailto:lbr.roundabout@gmail.com)



**JANET MORRIS**

**Freelance  
Hairdresser**

**Gents, Ladies &  
Children**

For appointment or  
consultation please call

**01823 660191  
07768 648244**

**Mariah Payne**

Lady Painter & Decorator  
with 20 Years' Experience



Free  
Estimates  
Given

**Quality  
Workmanship**

Interior & Exterior

Paintwork, Wallpapering

& Tiling

Mob: 07776 423418

Stallards, Standle, Wellington,  
Somerset TA21 9NJ

**Sparkles**  
Window Cleaning Services

Gutter, Fascia & Patio cleaning  
Conservatories and Solar panels

Traditional Service:  
30 years experience

**Paul & Tim Smale**

Domestic and Commercial  
Free Estimates: discounts for O.A.Ps

**Tel: 01823 461446**

Email: [squeegee.bucket@outlook.com](mailto:squeegee.bucket@outlook.com)

**ANDREW LOVELL**  
**Chimney Sweep**



**Clean and Efficient**  
**07946 303905**

31 Dixon Close  
Wiveliscombe  
TA4 2BT



**cakes Jackies cakes**

**Email – jackiescakes@icloud.com**

**Tel – 01823 672817**

**Mobile – 07866 125061**

## *Jackie's cakes & catering*

Delicious, fresh, home cooked cakes. Bespoke for all occasions; weddings, christenings, birthdays, celebrations - or just because you're worth it!

Catering for funerals; Buffets for 20-200 people, from setting the table and chairs to the washing up, saving you time to spend with family, friends or guests on a busy day.

Scones freshly cooked for an afternoon cream tea.



TREE SERVICES LIMITED



QUALIFIED  
WORKFORCE

# BRENDON HILL TREE SERVICES

01823 461789 • 07971 531333

[www.brendonhill.co.uk](http://www.brendonhill.co.uk)  
[info@brendonhill.co.uk](mailto:info@brendonhill.co.uk)

**FREE WRITTEN QUOTATIONS**



TREE SERVICES LIMITED



QUALIFIED  
WORKFORCE

**All Aspects of Arboriculture & Tree Surgery**

**Hedge Laying, Coppicing and Felling**

**Kiln Dried Logs and Woodchip for Biomass Boilers BSL REGISTERED**

**FULLY INSURED - NC ARB & NPTC QUALIFIED**



## YOGA

*the Iyengar way*

**Langford Budville Hall**

**Thursday 10.00-11.30**

**Tuesday 6.00-7.30 pm**

**To book contact**

**Jackie Douglas**

**[jacqueline douglas@hotmail.com](mailto:jacqueline douglas@hotmail.com)**

*Tracy Wint*  
SOFT FURNISHINGS

Having spent hundreds or even thousands on your decor, why settle for ready made or only a near match when it comes to dressing your beautiful home?

A complete, fast, friendly and personal service with quality second to none... and at a price that will undoubtedly surprise.

For your made to measure curtains, blinds or other soft furnishings simply call an expert.

TRACY WINT  
SOFT FURNISHINGS  
**01278 732734**

[tracywint@btinternet.com](mailto:tracywint@btinternet.com)

*Roman Blinds a speciality!*



## DEEJAY SECURITIES LIMITED



burglar alarms - cctv  
beams - door access

**JULIAN JONES**

**07711 567736**

Office tel: 01823 663 821

email: [info@deejaysecurities.co.uk](mailto:info@deejaysecurities.co.uk)

[www.deejaysecurities.co.uk](http://www.deejaysecurities.co.uk)

Stallards  
Standle  
Wellington  
Somerset  
TA21 9NJ



A printed annual guide and website where local people **recommend good quality and trustworthy** businesses



Helps you avoid  
Cowboys and Rogue Traders  
**OUR LOCAL Expert .co.uk**

Not online?

**Call Nick: 01823 218222**

For your free printed guide



**O M Hines Ltd**

Office: 01984 623424

info@omhines.co.uk

## Oil Tank Specialist

- ✔ Fuel Recovery
- ✔ Tank Suppliers
- ✔ Emergency Pump Outs
- ✔ Base / Stand Builders
- ✔ Tank Installations
- ✔ Tank Removal
- ✔ Filter, Firevalves
- ✔ TI/33D Risk Assessments
- ✔ Water Removal
- ✔ Oil Line Installations
- ✔ Tank Cleaning
- ✔ Temporary Tanks



**Diesel Tanks**

More Info Online



[www.omhines.co.uk](http://www.omhines.co.uk)

Unit 19-20 Station Road, Wivellscombe TA4 2LX

## Secure Self Storage Taunton . Lopen . Dorset

Secure, purpose-built, indoor self storage  
that's simple, flexible & affordable.

- 24 hour digital CCTV
- Monitored alarms
- Packing materials in stock
- Insurance options available

[www.beehive-selfstorage.co.uk](http://www.beehive-selfstorage.co.uk)

A member of our  
helpful team are  
always on site  
during office hours  
and will even  
accept your  
deliveries for you



# Local Transport Services

Somerset County Council has launched a traffic and travel website which provides live updates from the Council's traffic control team.  
[www.travelsomerset.co.uk](http://www.travelsomerset.co.uk)

## Slinky Bus

- ♦ **Anyone** in Langford Budville can use the bus. It is free for those with a bus pass and a reasonable fare will be charged for everyone else.
  - ♦ To use the bus you **must** register in advance. Download a form from: [www.movingsomersetforward.co.uk/public-transport/slinky-services-demand-responsive-transport](http://www.movingsomersetforward.co.uk/public-transport/slinky-services-demand-responsive-transport) or call 01823 331266.
  - ♦ To use the bus you have to book a place at least 24 hours and up to 14 days in advance. Bookings can be made between 9.30-3.30, Monday to Friday by calling 01823 331266.
  - ♦ The Slinky bus will make up to three return journeys a day at approximate times to Wellington and once to \*MPH. When you make your booking, check the current times which can change.  
\*There will be an extension to and from Musgrove Park Hospital on Monday, Wednesday and Friday for those who cannot use conventional buses.
- .. It isn't possible to just turn up at a bus stop and board.

**Any problems, ring 0300 123 2224 or email [transport@somerset.gov.uk](mailto:transport@somerset.gov.uk).**

## Wivey Link

Going Places.....



**Do you have difficulty getting out and about?**

- Door to door service operating from Wiveliscombe, we cover all surrounding Parishes, Taunton and Wellington. We will take you shopping, visiting or for hospital/doctors etc.
- Wheelchair friendly cars.
- Fares are very reasonable and bus pass holders get a concessionary rate.

**Could you make a difference to the community in which you live by becoming a driver for this essential service?**

**For more information on using Wivey Link or Volunteering telephone 01984 624666**  
or call into the Community Office The Square Wiveliscombe TA4 2JT  
we are open 10.00 to 1.00 Monday to Friday  
Wivey Link a division of the Wiveliscombe Area Partnership  
Charity No. 1132983

# Magazine Information

**Editorial team:** Saranne Cessford & Tryphena Huntingford - joint editors  
Denise Hunt - Treasurer; Jane Hancock; Alison Eland; Fiona Barber

To contact us please email: **lbr.roundabout@gmail.com** heading your email: Articles, Feedback, Advertising, Small Ads, etc.

Our final copy dates:

**Round About:**

August/September edition 19 July

October/November edition 19 September

**Round About in Brief:**

September edition 22 August

November edition 22 October

**Cover photograph:** Coronation Street Party: Photo Saranne Cessford.

*This issue of Round About printed by Character Graphics:*

[www.charactergraphics.co.uk](http://www.charactergraphics.co.uk)

# Advertising Rates

This magazine is distributed free of charge to around 300 households in and around the villages of Langford Budville and Runnington.

| Commercial | 6 editions |         | 1 edition |
|------------|------------|---------|-----------|
|            | Mono       | Colour  | Mono      |
| ¼ page     | £30.00     | na      | £7.00     |
| ½ page     | £60.00     | £100.00 | £13.00    |
| A5 page    | £100.00    | £200.00 | £25.00    |

Sponsorship of articles for a 1 year, six edition period is also available, as well as special rates for charitable and non-commercial advertising.

**Small Ads - Non commercial**

**For Sale items:**

Under £10: up to 4 lines free; additional lines £1.00 each.

Over £10: 50p a line for first 4 lines, additional lines £1.00 each.

**Wanted items:** £1.00 per 2 lines.

Contact us at **lbr.roundabout@gmail.com** to discuss your requirements.



## Runnington Cider Barn

Rent West Apartment for business or holiday

Come and stay in our lovely beamed Barn, full of character  
in peaceful hamlet near River Tone.

Wonderful, peaceful, sunny, uplifting atmosphere.

West Apartment is on the ground floor of Cider Barn

We are surrounded by footpaths, and you can walk to excellent local cafes  
or the Martlet Inn

Come and chat to me about it

Louise Bancroft - 01823 665533/07835 960704

[Anna.louise951@gmail.com](mailto:Anna.louise951@gmail.com)

[www.runningtonciderbarn.uk](http://www.runningtonciderbarn.uk)

# GIBBINS RICHARDS

## Making home moves happen



Nick Girono-Maddocks  
- Director

Nick has lived in the Parish for 25 years,  
and has a long-standing and proven track  
record with property sales in Langford  
Budville and the surrounding villages.

 01823 663311  [wg@gibbinsrichards.co.uk](mailto:wg@gibbinsrichards.co.uk)

 [www.gibbinsrichards.co.uk](http://www.gibbinsrichards.co.uk)



# Visit The Martlet

Langford Budville



Serving game and seafood specialties  
alongside pub favourites.  
Garden and indoor seating available.

**Beautiful B&B accommodation too.**

**Tel 01823 401330**  
to book a table

To view rooms or book  
accommodation visit  
[themartletinn.co.uk](http://themartletinn.co.uk)

Langford Budville, Wellington  
Somerset TA21 0QZ