

# *Round About*

*the villages of Langford Budville  
and Runnington*

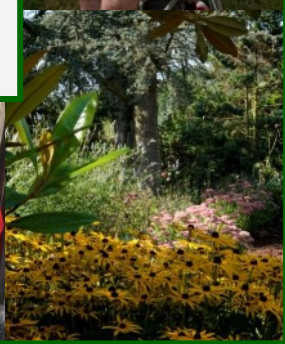


*October/November 2021*



# CONTENTS

- 1 Welcome
- 2 What's On
- 2 Budvue Cinema
- 3 Parish Council
- 4 News from the Villages
- 6 Living Well: Be Connected
- 7 Village Hall
- 8 Greener Langford Budville
- 9 Parish Party
- 11 Community Apple Day
- 12 Out & About: Ash Dieback
- 13 Seasonal Treats
- 14 Green Gardening Group
- 15 Recycle more
- 16 Our School
- 17 Langford Ladies
- 17 Friendship Circle
- 18 News from the Churches
- 22 Young Buddies
- 34 Local Transport Services
- 35 Community Contacts
- 36 Magazine Information



# Welcome ...

To the October edition of Round About.

It has been a busy little month, emerging from the protracted boredom of lockdown. Many of you came along to the **Parish Party** to enjoy the sunshine and company, and hopefully to learn a bit about the exciting things that are going on in Langford Budville. It was a chance to meet new neighbours, and catch up with old ones. I've included some pictures inside and in the collage.

I met up with more of you at the **Open Garden at Chipley Mill**. I know a lot of you are keen on gardening and finding ways to make your gardens yet more wildlife and climate friendly: If you haven't already put your name down and think you might be interested, check out **Greenfingers** to find out about the proposed **Greener Gardening Group**. It is all part of the **Greener Langford Budville** initiative, and there are of course other ways to be involved in that. This month we learn the shocking news that our calculated carbon footprint here is way above the national average.

Our **Parish Council** needs help: please do think about offering your services as we are short two parish councillors. They have supported these new initiatives with enthusiasm, and have contributed money and time to setting things in motion. So do think hard about getting involved. As a village we need to care for each other and the environment, to **Be Connected**, go **Greener**, **Recycle More** and eat well. Our **Seasonal Treat** can help with that.

Sadly, we have lost some parish residents, but we have also welcomed new arrivals. **News from the Villages** has the info. The new school year has seen some changes, but **Our School** continues to thrive. The **Churches** are getting active again and it is really lovely to hear the bells ringing for services both happy and sad.

I took some nice photos at the open garden and the party: I haven't been able to put all of them in - space constraints! If you think I may have taken one of you, or if you want a high resolution copy of any of the pictures in the magazine please get in touch - our contact is at the back of the magazine, along with lots of other **mag info**. The cover photo was taken at the open garden...

As we get more advertising we are losing space for articles and with so much news to report I haven't been able to get **Out and About** much myself - but we do have a report on the Ash dieback on the common from SWT. If we accept more advertising we can put in an extra 4 pages - but then I have to fill them! I need help for that - any volunteers?

Thanks as always to the editorial team, our contributors, distributors and our wonderful treasurer, who keeps me in line. Please let me know of any news from your neighbourhood, and if you are a distributor, remember to arrange a substitute if you're going to be away. I do need a new distributor for the homes along the Holywell Lake road - let me know if you can do that. It is only once a month. I can give you the details of the round.

*Saranne Cessford on behalf of the editorial team.*

# What's On:

Function	Venue	Date	Time
Police Beat Surgeries	Jubilee Hall	Wed. 13 Oct. Wed. 10 Nov.	10.00 to 11.00am
Parish Council meeting	Jubilee Hall	Mon. 11 Oct.	6.45 for 7.00pm
Friendship Circle: <b>Mcmillan coffee morning</b>	Jubilee Hall	Fri. 8 Oct.	11.00 am to 12.30 pm
<b>Table Top Sale</b>	Jubilee Hall	Sat. 9 Oct.	9.00 to 12.00 am
<b>Green Gardening Group</b>	Jubilee Hall	Mon. 11 Oct.	10.30 to 12.00 am
Budvue Cinema: <b>Dream Horse</b>	Jubilee Hall	Sat. 16 Oct.	7.00 pm
Friendship Circle: Coffee & Chat - funny photo comp.	Jubilee Hall	Fri. 22 Oct.	11.00 am to 12.30 pm
Greener LB <b>Apple pressing day</b>	Runnington Farm House	Sat. 23 Oct	10.00 am to 4.00 pm
Friendship circle: <b>Gun powder, treason and plot</b>	Jubilee Hall	Fri. 9 Nov.	11.00 am to 12.30 pm
St Peter's café <b>Soup Lunch</b>	St Peters Church	Wed. 10 Nov.	12.00 to 2.00 pm
Budvue Cinema: <b>The Father</b>	Jubilee Hall	Sat. 20 Nov.	7.00 pm

## Budvue Cinema

Our autumn season kicked off with the multi Oscar winning **Nomadland**. It was encouraging to see so many people enjoying watching the film and meeting up with friends. The film was shot as a semi-documentary and it was hard to tell who was an actor and who was a real life nomad. The wide landscapes of the desert came to life on the big screen. Those in the audience who heard Jane's presentation of film sound engineering at the Langford Ladies evening recognised the skill of the Foley artists in enhancing the dramatic effects of sound.

The next film on 16<sup>th</sup> October is **Dream Horse**, which is a completely different genre and is based on the true life story of a small community who bought a race horse and hoped for success. You will have to see it to find out what happened.

November's film on 20<sup>th</sup> is **The Father** starring Anthony Hopkins for which he won an Oscar.

Tim Wyatt



# News from the Villages

## Parish Council

The Parish Council Meeting was held at 7,00pm, at Langford Budville Village Hall, on Tuesday 21 September 2021.

Due to the resignation of Katie Spackman, Derek Sowden has been appointed as Chair. Therefore, the Parish council now has two vacancies, and the statutory notice has been put on noticeboards. We would encourage anyone in the parish who may be interested to email [langfordbudvillepc@gmail.com](mailto:langfordbudvillepc@gmail.com) You don't need any special skills, just an interest in helping your community and full training will be given.

**Greener Langford Budville – Update on Project:** The contract for the travel feasibility study has been agreed and will incorporate feedback received from parishioners about traffic speed in the village. A sustainable **gardening group** has been set up and had its first meeting at Chipley Mill. **Bat walks** have been taking place and the conservation group is working on the common.

**Events Task Force – Update:** The **Parish Party** was very well supported with over 100 in attendance. Thank you to all the organisers. Also thanks for all the suggestions at the Parish Party for the upcoming **Jubilee**, more to come on this in due course. A **Community Apple Day** is planned for the 23<sup>rd</sup> October.

The next Parish Council meeting will be held on **Monday 11 October** 2021 at 6.45 for 7.00 pm at Langford Budville Village Hall. Everyone is welcome.

*Helen Chadwick: Langford Budville Parish Clerk*

## Your Parish Council needs you!

Are you resident or do you work in the parish of Langford Budville? Do you want to have a say in how your Council Tax is spent? Your Parish Council has two vacancies. No experience necessary, just enthusiasm! Contact [langfordbudvillepc@gmail.com](mailto:langfordbudvillepc@gmail.com) for more details

[www.greenerlangfordbudville.com](http://www.greenerlangfordbudville.com)

Many thanks to the Parish Council for funding an upgrade to our website access so that it is now easier to find if you just Google "**Greener Langford Budville**". Check out the recent changes!

# News from the Villages:

## Farewell to John Pitman

**John Pitman (30.07.1940 to 09.09.2021):** We are sad to report the death of John Pitman of Petersmead, Langford Budville.

John died on 9 September 2021 at Calway House in Taunton. He was born and raised in Wellington. After high school at Courtfields, he served an apprenticeship in carpentry with Walter Hill Builders in Wellington, before going on to study Construction and Surveying at college in Taunton, where he won the Stancell Cup. He became a partner at George Bros. in Taunton, and supervised the building of the nursery school at Taunton School. Later, he became the Estates Bursar at the school and worked there until he retired.

John met Valerie Brewer, who was born in Langford Budville and has lived here for her entire life, at a dance at Nynehead Village Hall, and they married on September 22, 1962 at St Peter's Church. On their marriage he moved with her to Langford Budville, living first with Valerie's parents, and then in one of the first small houses in Swifts when they were built. As their family grew up they needed more space and planned to move to Wellington, but the opportunity came up to purchase a part of Petersmead, in those days a meadow grazed by a herd of dairy cows, from farmer Geoffrey Braddich. John and Valerie were able to buy a piece of the land and build the bungalow, now called Petersmead, where they have lived ever since. John designed the bungalow and supervised the construction.

He and Valerie had three children: Jayne, Clare and Andrew, who all went to the village school. Between them they have given John and Valerie nine grandchildren – all of whom went to Taunton School - and two great-grandchildren. John was a very family orientated and private man who had a great rapport with the grandchildren and was close to them all. He took a great interest in their considerable achievements on the sports field, and in their studies and careers. He loved music and loved to hear the church bells ringing. Barbara Streisand's 'Evergreen' was a favourite, and he delighted to dance to that in his last years. His death leaves a big void in all their lives.



John enjoying the sunshine in the company of his granddaughter, Carly and great-grandchildren

After John retired, he and Valerie went travelling – all over Europe, and to Egypt and the Caribbean – overland on coach trips and on cruises. They really enjoyed the chance to see new places and learn about other cultures after a working life limited to one small area of Somerset. Their favourite destination was the Norwegian Fjords. They made friends with many

other travellers they met on their various trips, keeping in touch over the years.

The private family funeral was held at St Peter's Church on 24 September. John is buried in the churchyard at Langford Budville.

In memoriam donations, if desired, for **Reminiscence Learning** can be sent c/o the funeral directors, H Tredwin & Son, 15 and 17 North St., Wellington TA21 8LX.

*Saranne Cessford*



John & Valerie in earlier years

---

## Welcome to new neighbours

### New Runnington Residents

**Kirsty & Craig** who have moved into the Bell and Birdtable: Craig is a professional gardener, and they have made a beautiful garden.

**Will and Sarah** have moved into Higher Houses, and are also keen gardeners.

Runnington Residents were able to meet up and get to know new neighbours at the Annual Barbecue which was held at Sandyland House in September.

### And new Langford Budville Residents

**Phil & Ann Newnes** have moved into Ash Barn, Chipley. Kentish in origin they moved to the South West 20 years ago, and 3 of their children (+2 grandchildren) now live in Wellington, so they are nearby. Ann loves the garden and playing around with fabric, Phil plays golf and watches sport for relaxation. Both enjoy eating out!

**Courtis Robinson**, Baby Courtis joined parents Rebecca Robinson and Ed Bunce-Phillips of St Peter's cottage on 3 August - we look forward to meeting him.

**Tim and Ali Eland, sons Eddie and Rex, and Rocky the border terrier** recently moved into Orchards on Butts Lane. They moved here from Twickenham as they felt it was time to get away from London. Ali grew up in Somerset, and her parents are in Weston, so this seemed like the right place.

Ali is hoping to find the time to get back into surface pattern and fabric design which she worked in previously, but needs to come to terms with the new technology. Tim does shop fitting and works all over the south of England. Eddie has started secondary school at Kingsmead, and Rex is going to the village school. The boys have slotted into village life really well.

### Farewell to Chris & Maggie

We hope that **Chris and Maggie Atkins**, who moved from Swifts to Ashby de la Zouche, settle down well. You may have seen Chris out with his guide dog Heidi. Thanks to all the villagers who helped them with the move.

# Living Well: Be Connected

There are quite a few lists around to help us to optimise our wellbeing but I particularly like the five foundation stones identified in research by the **New Economics Foundation** in 2008.

- Connect**
- Be active**
- Take notice**
- Keep learning**
- Give**

It was absolutely fantastic that key groups within Langford Budville parish worked together to enable such a high proportion of us to meet and have fun on 12 September at the **Parish Party**. If



we don't know each other, we can't start to make great things happen together through shared ideas and actions. We are social creatures and need to connect with others in order to function well, for our own sakes and also to work well as communities. What a relief it was to be past the worst of the isolation of the last 18 months!

Although the weather was too kind and the company too good to spend a lot of time reading about the **Greener Langford Budville** initiatives on display at the village hall, it is only by connecting with one another that we can actually respond constructively to the emergency that is climate change. We need to connect to find ways to make positive changes to the way we are living. Undoubtedly, connection is an important attribute of a vibrant community. We all have different skills and I've always envied those who seem to easily connect with others. But it is well worth trying: forgive me if I've met you several times and still get faces and names muddled up. It happens to us all!

It would be good to publish more about the ongoing connections in the village – please let us know. You can reach us at [lbr.roundabout@gmail.com](mailto:lbr.roundabout@gmail.com).

*Tryphena Huntingford*

An advertisement for 'Herbal Teas from Harpford Farm'. The background is a lush green field with tall grass and some flowers under a blue sky. In the foreground, there is a wooden sign on two posts that reads 'Herbal Teas from Harpford Farm'. To the right of the sign is a stylized purple harp illustration. At the bottom left, the website 'www.harpfordherbs.co.uk' is written in white. At the bottom right, the phone number '07805 512388' is written in white.



# Greener Langford Budville

## Langford Budville's high carbon footprint

One of the proposals for the **Greener Langford Budville project** was to measure our carbon footprint. The original thought was to collect data, such as transport and fuel use, which would give us a baseline and provide inspiration on what aspects of our lives to change to get that footprint smaller. However, the challenge of collecting the data is daunting and probably not worth the effort as so much work on carbon footprints has already been done.

Somerset County Council provided relevant training for Parish Councillors Juliet Shrimpton and Julian Kupfer which included understanding of the IMPACT study by Exeter University which compares parish carbon footprints around the country.

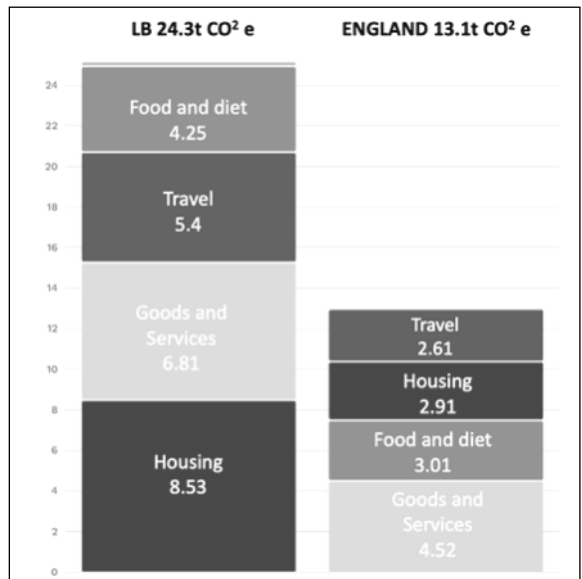
The comparison graph, produced by Ian Loudon using the IMPACT tool, shows Langford Budville's carbon footprint per household in tonnes per annum compared with the national average. It is quite shocking to see how very high our footprint is. Much of the reason for this is our very high oil consumption both for heating and for travel. The next challenge is to work out what we can change to reduce our footprint. Juliet and Julian will be writing a piece (hopefully in the next issue!) looking at practical steps forward that we can take as a community.

In the meantime, here are two free, recommended personal carbon footprint calculators. You have to fill quite a bit in to get an answer – but that improves the accuracy. It would be interesting to see how your personal footprint compares with that of the parish and what choices you might be able to make to lower your own – feedback to Round About please!  
<https://zero.giki.earth/>  
<https://www.resurgence.org/resources/carbon-calculator.html>

The symbol CO<sub>2</sub>e (the carbon dioxide equivalent) used in the graphs is now the standard unit and includes many different greenhouse gases. The three main gases have different sources and create different amounts of global heating:

- ♦ Carbon dioxide: mostly released by burning fossil fuels, forests, or organic waste and contributing to 74% of global emission.
- ♦ Methane: mainly released through agriculture and the decomposition of landfill waste and contributing 17%. A kilo of methane has the same heating potential as 28 kilos of carbon dioxide but stays in the atmosphere for only 10 years.
- ♦ Nitrous dioxide: Mostly from fertilizers and contributing 6%. A kilo of nitrous oxide has the same heating potential as 265 kilos of carbon dioxide but stays in the atmosphere for only a few days.

*Ian Loudon and Tryphena Huntingford*





## *News from the Village Hall*

We were delighted to host a **Parish Party** on 12 September. It was great to see people eating, talking and reading about the different organisations that are active in the village. It was also good to support the Martlet and the White Post and we are very grateful to both of them for supplying food for the event. The party was co-funded by the Parish Council, the Village Hall and Greener Langford Budville and we very much hope for similar collaboration on future events – starting with the **Platinum Jubilee** next year.

Bookings for regular activities are now more or less back to pre-Covid levels and we are starting to see a revival in bookings for one-off events. We continue to provide hand sanitisers and signage to remind people of the need to respect distance.

On 20 September we held our **Annual General Meeting** and reviewed the last two years' activities and financial performance with the help of a glass of wine. The hall has been a recipient of the Government's small grants scheme designed to compensate organisations for loss of income during the pandemic. This has been very important and allowed us to stay in surplus as income dropped by around 60% whilst costs reduced by only by about 30%. It was great to welcome Tim Wyatt and Mike Grabham as new trustees and many thanks to Lyn Wyatt, who has stepped down, for all of her many years of service as a trustee. Both Tim and Mike have backgrounds in electrical engineering which seems to augur well for sound in the hall in general and Budvue in particular. On a related note engineers from Telent have taken the preliminary steps to install fibre at the hall.

The AGM was also an opportunity to thank our key holders who rotate week by week to open and close the hall and meet and greet hirers, and are an essential part of the organisation. Also Rosina Matson and Steve Care who clean the inside and look after the grounds respectively.

During the Summer we installed a memorial bench to Lighton Weymouth on the plateau area and hope that this will be well used. Its location is close to a tree planted in his memory and benefits from long views over to the hills. Both tree and bench were paid for by contributions from parishioners.

Whilst the bank to the back of the hall is still establishing itself and we work out whether it is rabbits, deer or generally hostile conditions which is holding some

plants back, the bed at the foot of the bank and the wall beneath this look very smart indeed. Thanks to Lynne Moore and Margaret Brown for working on the first and to Tim Seddon for painting the second.

Looking forward we would very much welcome new faces either as key holders, trustees or as willing helpers for events and occasional maintenance. And, of course, to take the treasurer role from Pam!

Michael Huntingford

**The Jubilee Hall is an ideal venue for a wide variety of events including wedding receptions, parties and dances, shows and concerts, club and society meetings, fetes and community events, conferences, meetings and training days**

**In normal times** the Main Hall seats up to 150 theatre style, or at tables

The comfortable Committee Room has seating for 36

Large, well equipped kitchen

Spacious foyer and cloakroom Gravelled patio + grassed terrace

Easy access and parking for 40+ cars Full bar/entertainment licence

For booking availability visit [www.lbjubileehall.com](http://www.lbjubileehall.com)

## Parish Party

**The Parish Party**, held at the Jubilee Hall on Sunday 12 September, was a great opportunity for **all** parish residents to get together and enjoy a free meal (supplied by our local eateries, the Martlet and White Post Café), meet new neighbours and learn about all the new initiatives in the village.

The party was organised and paid for by the **Parish council**, the **Jubilee Hall Trustees** and the **Greener Langford Budville** group. Set up, serving and clean-up was all done by volunteers from the villages.

There were games, displays and information regarding all the groups and organisations in the villages. The sun shone and a good time was had by all!

**See overleaf for more pictures.....**



Maia displays the prize hamper for winner of the sustainability quiz



Parishioners enjoying the sunshine and the good company



Hall Trustees keeping tabs



Thomas playing skittles



Quiz winner Emily Clarke



Greener LB displays in the Hall



Pumpkins & apple juice

# TABLE TOP SALE

@ LANGFORD BUDVILLE JUBILEE HALL

Saturday 9 October 9.00 am until midday

Come along and see what you can find: anything and everything...  
Or book a table to sell all those bits and bobs you sorted out over lockdown

To book a table for £10.00 email [bookingclerk.lbjh@icloud.com](mailto:bookingclerk.lbjh@icloud.com)

**Refreshments available.**

Set up on Friday 8th from 5.00 to 7.00 pm, or Saturday from 8.00 am

# COMMUNITY APPLE DAY

Saturday, 23<sup>rd</sup> October, 10.00 am to 4.00 pm

Runnington Farmhouse, TA21 0QW

BRING YOUR CLEAN APPLES & BOTTLES (SCREW-TOP WINE BOTTLES ARE PERFECT) TO RUNNINGTON FARMHOUSE AND HELP TO TURN THE PARISH'S FRUIT INTO JUICE. EXPECT TO HAVE YOUR APPLES MIXED UP WITH THOSE OF OTHERS, AND FOR YOU TO GET AROUND HALF A LITRE OF JUICE FROM EACH KILO OF FRUIT.

A DONATION TO COVER EQUIPMENT HIRE OF AROUND 50p PER BOTTLE WILL BE WELCOME.

PLEASE EMAIL [greener.lb.info@gmail.com](mailto:greener.lb.info@gmail.com) IF YOU PLAN TO COME, IF YOU HAVE SURPLUS APPLES YOU'D LIKE TO DONATE OR IF YOU'D LIKE FURTHER INFORMATION.

More details at [www.greenerlangfordbudville.com](http://www.greenerlangfordbudville.com)



## LB Team Broadband Update

With the imminent completion of the fibre infrastructure to much of the village by **BT(USO)**, the arrival of **Airband** next year and improvements to the **4GEE** signal we hope that the majority of the parish will have some form of faster broadband coming their way within the next year or so.

With this in mind, we are shutting down the Broadband website. If you would still like to contact one of the broadband team you can do so by email: [lbteambroadband@gmail.com](mailto:lbteambroadband@gmail.com). Thank you to all those that have supported our broadband journey over the last year and half.

Jane Hancock

# *Out & About on the common*

## **Langford Heathfield Nature Reserve: Ash dieback safety works**

As I'm sure many of you are aware the UK's ash trees are very sadly being attacked by ash dieback disease. This fungal disease arrived from the continent a few years ago and is now widespread in our ash trees. The current advice from the Forestry Commission suggests that this disease will kill the majority of our ash in the next 10 to 15 years, with only 1 to 5% surviving. If this prediction proves to be correct our woodlands and countryside will look very different in a couple of decades time.

The Somerset Wildlife Trust policy is to try and retain as many ash as possible, as it is highly likely that even the few trees that survive will show symptoms, with dying branches etc. So, unless there is a clear Health and Safety risk, we will not be routinely felling diseased trees. Unfortunately, many ash trees at Langford Heathfield, including some very large ones, are alongside the roads and paths and these will have to be felled as many are showing signs of the disease.

This is not work that the Trust wishes to do, it is expensive, difficult and ecologically damaging, but to ensure public safety we have no choice. Across the County felling diseased ash is likely to cost us around £600,000.

This ongoing safety work will continue this winter with trees being felled in many areas where they are adjacent to roads, paths and private properties. The bulk of the felling will be at the southern end of the reserve, alongside the road from the Bindon Farm entrance down towards White Post Nursery and also alongside the public footpath down towards The Cottage.

Very occasionally, trees other than ash will also need to be felled, for example where an oak tree with significant rot at the base is growing just behind a group of roadside ash. The oak will need to be felled at the same time as the ash, as without the ash to prevent it falling onto the road it represents a significant risk.

In order to try and retain as many ash trees as possible within the reserve we will only be felling diseased trees adjacent to the main managed paths, which are marked on the information panels. We strongly advise visitors to stick to these paths and avoid the woodland areas entirely during windy weather.

If you would like any further information about this work, please contact me on my email: [david.northcotewright@somersetwildlife.org](mailto:david.northcotewright@somersetwildlife.org) or phone the Somerset Wildlife Trust on 01823 652400.

*David Northcote-Wright:*

Senior Reserves Manager West Somerset and Blackdowns

# Seasonal Treats: Posh baked beans

A friend introduced me to borlotti beans a couple of years ago. They grow quite vigorously and are not much trouble. You can eat them young like french beans or leave them to mature into their beautiful red and white colours and pod them like broad beans. The podded beans have a lovely nutty flavour and make amazing "posh baked beans"; delicious served with bacon and an egg on top for a weekend brunch.

If you can't get fresh beans try adding a tin of drained borlotti beans directly to your sauce for the last 10 minutes.

## Ingredients

15 to 20 pods of fresh borlotti beans

Bay leaf

Salt

## The Sauce

Splash of rapeseed or olive oil

1 onion chopped

1 garlic clove crushed

4 or 5 large fresh tomatoes

1 red pepper (optional)

1 tsp of tomato purée

1/4 tsp of sugar

Splash of Worcestershire sauce

1/2 tsp of mixed herbs

1 tsp of vegetable bouillon or half a vegetable stock cube.

## Method

Fry the onion in the oil until soft. Add the crushed garlic for a further 2 minutes. Add the remaining sauce ingredients and simmer for about 30 mins.

Meanwhile, simmer the borlotti beans in water with a bay leaf for about 30 minutes until soft. Don't drain immediately but add 1/4 tsp of salt and leave to stand for 10 minutes (this sounds like a lot of salt but it transforms the flavour and you drain it off).

Drain the beans and add to the tomato sauce.

Serve with bacon and a poached egg on top.

*Jane Hancock*



# GreenFingers: Green Gardening Group

## Part of the Greener Langford Budville Initiative

When the bid for funds to promote sustainability in the parish was successful, it seemed that gardening was an obvious area in which individuals could make changes. And that a group to share information, seeds and general know-how would have support in the village.

So when Jackie and Roger Milsom offered to open their wonderful organic garden at Chipley Mill, it looked like a good place to start the process of gauging if there were enough people to get such a group going. We had a really lovely day for it. The weather was kind and everyone seemed to enjoy wandering around the garden and the productive veggie patch. The children went pond-dipping, and grown-ups enjoyed tea and cake on the patio. Jackie had set up displays of propagation, and her no-dig veggie patch looked amazing.

We got enough names, and some money as well. (Many thanks to all who helped, bought plants etc.) The next stage is a meeting at the **Jubilee Hall** on **Monday, October 11<sup>th</sup> from 10.30 - 12.00 am**. Everyone is welcome. We hope to find out which initiatives would be supported and what kinds of activities would be popular.

If anyone is interested in joining this group, but can't get to that meeting, please contact me and I will put you on the distribution list.

Christine Loudon  
01823 664732 or  
christineloudon@hotmail.com





# LANGFORD LAKES

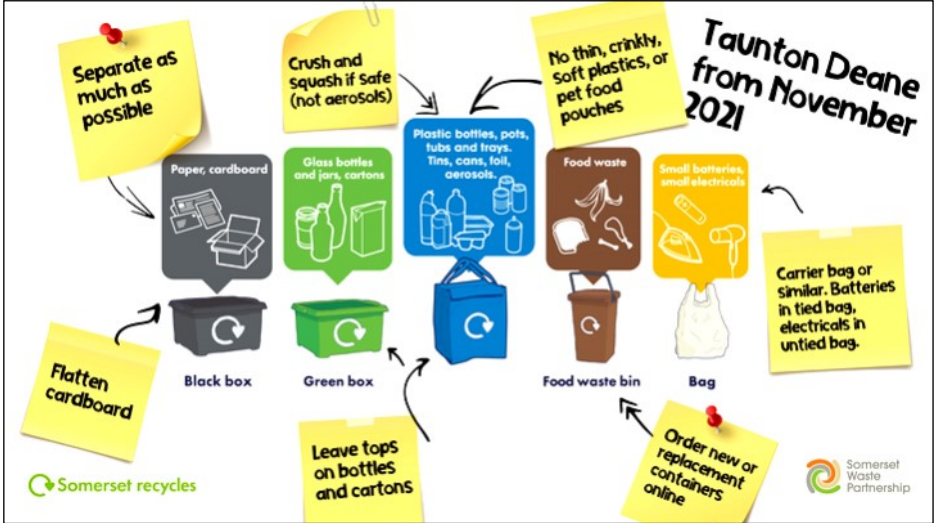
Local Family Run  
**Christmas Tree Farm**  
set in the heart of rural  
Somerset

Call us on **01823 400476** or visit [www.langfordlakes.co.uk](http://www.langfordlakes.co.uk)



# GET READY FOR RECYCLE MORE

From November the following extra items will be collected each week: Plastic pots & tubs, cartons & aerosols, small batteries and small electricals. You'll receive a new Blue Bag. General waste will be collected **only every three weeks**. Look out for the pamphlet in the post from Somerset Waste Partnership. [www.somersetwaste.gov.uk](http://www.somersetwaste.gov.uk)



## YOGA

*the Iyengar way*

**Langford Budville Hall**

Thursday 10.00 - 11.30

Tuesday 6.00 - 7.30 pm

**New 12 week course  
Starting 14/16 September**

To book contact  
**Jackie Douglas**

[jacquelinedouglas@hotmail.com](mailto:jacquelinedouglas@hotmail.com)

## Small Ads

**Free:** 2 x green compost bins  
2 years old: 40" H x 32" W at base.  
Sometimes called 'daleks'  
Please collect: 01823 667294

**Round About** offers free short small ads for local residents, for items going for free or costing <£5.00. We make a small charge for longer ads, or for items costing more than £5.00.

Please email  
[lbr.roundabout@gmail.com](mailto:lbr.roundabout@gmail.com)  
with Small Ads in the subject line.

# Our School

The school has had some staffing changes at short notice at the beginning of this academic year. We looked forward to welcoming our new Head of School who was taking over from Jane Major. Unfortunately, this change has not been possible and Moira Brown is currently the Acting Head of School. She has been working in the school for the past four years as Special Educational Needs Coordinator and Safeguarding Officer. Jacqui Collier continues to be the Executive Head.

On the plus side, the school has been able to return to a substantially normal pattern post-covid and there is a range of special activities that have already taken place and are planned for this term.

We have welcomed a new Reception year into the school. They seem to be loving their time here. We've also returned to our weekly swimming lessons at Wellington Sports Centre. As with the rest of the country, the children have really missed being in the pool.

Our Year 6 pupils had fun learning how to stay safe on the road with their Bikeability course. Look out for them out and about, following the Highway Code on their bikes.

We had a real treat with a visit from a good friend of the school, Pete the Poet. The whole building was filled with enthusiastic children, creating their own stories, music and song. In the coming weeks we are looking forward to our whole school Harvest Service and a trip to the Brewhouse Theatre for class 1.

We hope and expect to feel a little more settled by the time the next Round About comes around.

*Moira Brown*

Acting Head of School: Langford Budville Church of England Primary School



Bikeability



Pete the poet

# Langford Ladies

Langford Ladies' September meeting was a real treat for us all. With her experience of working with a sound studio creating sound effects for films, Jane explained how this was done and challenged us to "have a go" at producing sound effects for short action clips of film. It is amazing what sounds can be made with flapping tea towels (birds in flight) rubber gloves crunching cat litter (penguin's footsteps) and knocking sticks together (antlers clashing)! Thanks to Jane for the most enjoyable and insightful evening and for the delicious nibbles and drinks which helped oil our creative minds. Thank you to Tim too for assisting so professionally with the technology.

On Wednesday October 20th. 7pm. at the village hall, Lucy Pendrick from "**The Whispering Wild**" studio at White Post will be Langford Ladies' guest, sharing her artistic skills by demonstrating needle felting. She will bring samples of her artwork, watercolours and 3D creatures and tell us what inspires her creations. Please bring a sharing plate of nibbles. Coffee and tea will be provided. Please contact Lynne Moore 01823 400665 or lynneandkeith@googlemail.com.

Lynne Moore

# Friendship Circle



Our meeting on August 27th was our Summer BBQ. Sarah, Pam & John were in charge again this year and, as usual, they did us proud with lovely food & drinks. Many thanks to the three of them. We also had an informal competition - 'How many words can be made from Summer Barbeque' which was won resoundingly by Lyn & Shirley.

September 10th was the **AGM**, which was held later than usual because of the pandemic. The members approved the minutes from 2019 and the financial audit. They also showed their appreciation of the committee's work. Then after the serious business the meeting was lightened when David read an amusing passage brought in by a member - '*Instructions on how to give a cat a tablet.*'

Our next meetings are:

October 8th - **Macmillan Coffee Cake morning.**

October 22nd - Coffee & Chat with funny photo competition.

November 5th - '**Gunpowder, Treason & Plot**'

Sheila Faulkner

---

This is a reminder that Cat Sweatman is our **Village Agent**, based in Wiveliscombe. She may be able to help you if you have a problem that could be fixed by accessing the right people, services or agencies, but are unsure where to begin. You can reach her on 07746 340546 or [cat@somersetccc.org.uk](mailto:cat@somersetccc.org.uk). You can also contact CCS directly on 01823 331222. for general information about the Agents service go to <https://somersetagents.org/somerset-village-agents/>

# News from the Churches

## Bishop's Letter

Whenever I listen to one of Jesus' searching questions I find myself thinking "What would I do in these circumstances?" If I were casting my nets, and Jesus said "follow me", would I do it? I imagine many of us would be hoping that we never have to find out. It's often assumed that being called is just about the religious life to a particular ministry, lay or ordained. Of course, it is about that for some of us, and thank God for that, but in the New Testament, vocation or calling has a much wider understanding. St Paul talks to the Corinthians about this when he writes "Now there are varieties of gifts but the same spirit; and there are varieties of service, but the same Lord; and there are varieties of working but it is the same God who inspires them all in everyone. To each is given the manifestation of the Spirit for the common good."

Every one of us is called to use the gift or gifts we've been given to help build up the body of Christ. That "building up" can never be confined to Sundays. Building up is about using the whole of life, including Monday to Saturday. The very act of working or being at home, school, work, leisure is vocational. Our daily behaviour becomes a sacrament and an offering.

The realisation that we are being called comes in many different ways. For some, it's like a sudden flash of light as came to St. Paul on the Damascus road. But for others, it's just not that clear. I have listened to people who described their sense of calling as a feeling of discomfort. "Like having a toothache", their "yes" a moving towards a sense of peace and clarity. Whether you know what God is calling you to do or are still searching, remember, God has made you for a purpose. And God will work that out, but in God's own time, not yours.

With my prayers and blessing,

*Bishop Trevor (Assistant Bishop for Diocese of Bath and Wells)*

## Preparing to welcome Afghan refugees

Many areas across the diocese of Bath and Wells are preparing to receive Afghan refugees. It's not yet known how many families will be coming, but in areas such as Bath and Weston-super-Mare, organisations are already making preparations. **Bath Welcomes Refugees** have put out a call out for non-perishable foods, toiletries, and cleaning products and set up three collection points. Organisations across the diocese will also be looking for volunteers to help and support those families in need.

Check your local organisations for more information. Or keep an eye on our social media channels where we will share details as we receive them .

## Church Services Rota

Date	Langford Budville	Runnington	First Reading	Second Reading
<b>3 October</b>	11.00 am HC	Join Langford	Genesis 2. 18-24	Hebrews 1. 1-4, 2. 5-12
<b>10 October</b>	Join Runnington	10.30 Lay-led Service	Amos 5. 6-7, 10-15	Hebrews 4. 12-16
<b>17 October</b>	No service	No service	Isaiah 53. 4-12	Hebrews 5. 1-10
<b>24 October</b>	Join Runnington	9.00 am HC Service	Isaiah 55. 1-11	2 Timothy 3. 14-4.5

**5th Sunday:** 31 October: 10.00 am service at Thorne St Margarets.

10th October: **Leaving Do for Rev. Selina Garner:** 3.30 pm at St John's, Wellington—Prayers and Cream Tea.

**East Group Church contact:** Revd Alan Ellacott 01823 669824: Ring the Parish office number 01823 665254, or email [stjohns.wellington@googlemail.com](mailto:stjohns.wellington@googlemail.com)  
Martin Beaumont—01823 400127

### Plant a tree in partnership

In November global leaders come together in Glasgow at **COP26** to talk climate change. In Bath and Wells we are asking people to come together with farmers in their local area to plant trees. Farmer and our Rural Affairs Adviser, Rob Walrond, who is in talks with organisations who may supply the trees, says, *"It's a great way Christians can make a practical difference in their communities. The fruits of these partnerships will benefit us all."*

Visit our website to find out more

### Modern Anti-Slavery Day

An estimated 40.3 million people in the world today are trapped in some form of modern slavery, including thousands of people in the UK. Anti-Slavery Day 2021 on the **18 October** is a day to raise awareness of the need to eradicate all forms of slavery, human trafficking and exploitation. This year, Sunday the 17 October the Church of England national online service led by Rt Revd Simon Burton-Jones Bishop of Tonbridge will be on the topic of modern slavery. **17 October** will also be an opportunity for churches to focus their services and prayers on modern slavery to help raise awareness of the issue.

# *News from Runnington Church*

The PCC hosted a BBQ for all of Runnington at Sandyland House on 5th September, which was a lovely, relaxed occasion on a warm sunny afternoon, allowing everyone in the village to meet up again after lockdown, and also the new arrivals in the village to meet others.

Sue Osborne welcomed everyone, including recent arrivals Tim and Sharon Hiscock, Fliss Mansfield, Siobhan Murphy, Craig and Kirsty, and Will and Sarah, and was able to take the opportunity to acknowledge to all the McGrath's gift to the PCC. We were also able to invite Martin Kirkbride along, the day before his licensing at St Johns as interim Team Rector. Rebecca Osborne did wonders in pulling the whole event together, and there were some delicious salads and puds contributed by the many helpers. All in all, a great occasion.

Looking ahead, our October services are the 10.30am lay-led service on the second Sunday (10th) and the 9am Holy Communion service on the fourth Sunday (24th) which Martin Kirkbride will be taking. Equivalent services in November will be on the 14th and 28th November.

John Houghton



Runnington residents had some sunshine for the annual barbecue. It was a great chance for new and old residents to meet up after the lockdown.

# Notes from St Peters

Autumn is here and with it our **Harvest Festival** held at the beginning of the month. All the gifts generously donated were given to the Food Bank in Wellington.

Our **new Bell ringing team** will be ringing on alternate Wednesday evenings and also at various services from now on. It is really lovely to hear our bells in use again. We now have a **regular service on the first Sunday of each month** followed by coffee and biscuits to give our Churchgoers a chance to catch up with each other.

We will be having a soup lunch at St Peters on Wednesday 10th November. Do join us for that! It is a good place to enjoy a warming meal and meet up with your neighbours.

It is with great pleasure that we welcome **Martin Kirkbride** as the **interim Team rector** and I am sure many of you will have already met him at the Parish Party. We look forward to welcoming him to St Peters in due course.

We also are saying goodbye to **Rev Selina Garner** who is moving to take up a post in Devon. She will be missed especially by the school where she was very involved with the pupils' religious education.

We also send our condolences to the Pitman family on the loss of John Pitman.

*Sarah Nutt*

-----  
It is lovely to see the Churches becoming active again:

St Peter's recently hosted the wedding of Alex and Bess Hamilton: the flowers were superb, the weather good, and the bells rang out!

The couple emerged through a very smart military guard of honour,

The groom's family live in Runnington, and Alex went to Langford Budville School and later to Wellington School.



## St Peter's Café

2nd Wednesday of the month: 12.00 to 2,00 pm



**Soup lunches**  
£7.00/person

Wine, raffle, produce

# Young Buddies

Q: Why didn't the skeleton go to the party?

A: He had no body to go with.

Q: What's a vampire's least favourite food?

A: Steak.



## HALLOWEEN WORD SEARCH

E O A Y H F L T P U M P K I N I B  
R I N Z A S K E L E T O N B T R F  
J W B J L C Z P A Z V H C T I W V  
O M D M L M C I G A M F D E V V A  
V A R J O V K O S T E Y R S E C M  
E E E N W Z Z N U R L B J U E R P  
Y Z B G E F J Z N I S S X O W A I  
N L O K E O W Y D C Z C Q H D K R  
W K T C N L P S E K Z C R D L Q E  
J T C C E E M Z A O O I P E L L F  
W Z O S E A C V D R E A U T U M N  
J W W R E I Z P U T O P S N L J A  
L V C R Y J T L S R Y V E U C C G  
N X C V Q Y S U V E X P V A Z N D  
F S Q G Y T F I Z A V P A H F W G  
C O S T U M E S U T L R E A F O Z  
W P V V Y D N A C F E D L J K Z U

TRICK OR TREAT WITCH ZOMBIE HAUNTED HOUSE  
VAMPIRE LEAVES AUTUMN OCTOBER CANDY COSTUMES CREEPY  
HALLOWEEN MAGIC PUMPKIN SCREAMS SKELETON UNDEAD



# Somerset Hearing

NEVER MISS A MOMENT

Services we provide –

- Comprehensive hearing assessments
- Independent advice on all leading hearing aid brands
- 30-day trials with all hearing aids
- Ear wax removal service
- Repairs and accessories to all brands
- Home visit service

01823 475113

[www.somersethearing.uk](http://www.somersethearing.uk)

Exchange House  
12-14 The Crescent  
Taunton  
TA1 4EB



**South  
GUNDENHAM  
FARM**

## Celebrate Summer 2021

with delicious locally produced free-range, succulent OSB pork and grass-fed lamb reared on our small farm near Langford Budville, Wellington

**To order:** Free delivery on orders over £10.00

Call me on 07554 743 446  
Email me [Katie@southgundenhamfarm.co.uk](mailto:Katie@southgundenhamfarm.co.uk)  
Find out more [www.southgundenhamfarm.co.uk](http://www.southgundenhamfarm.co.uk)

# JON CLARK CHIMNEY SWEEP



Chimney Sweeping



Bird & Cowl Guards Fitted



Wood Burning Stove Installations



HETAS approved



Insurance recognised certificates issued



Member of Sweep Safe



Over 13 years experience



Camera surveys



01823 430 200 / 07976 950 347



jon.clark01@btconnect.com

[www.jonclark-chimneysweep.co.uk](http://www.jonclark-chimneysweep.co.uk)

# GIBBINS RICHARDS

## Making home moves happen

Your **Trusted** High Street Estate Agent,  
Proudly Selling Property In This Area  
**Since 1991**



01823 663311



wg@gibbinsrichards.co.uk



[www.gibbinsrichards.co.uk](http://www.gibbinsrichards.co.uk)



# Sparkles

Window Cleaning Services

Gutter, Fascia & Patio cleaning  
Conservatories and Solar panels

Traditional Service:  
30 years experience

*Paul & Tim Smale*

Domestic and Commercial  
Free Estimates: discounts for O.A.Ps

**Tel: 01823 461446**

Email: [squeegee.bucket@outlook.com](mailto:squeegee.bucket@outlook.com)

# TGF PLASTERING



**CALL ON 07717 413 239**

QUICK, CLEAN AND  
PROFESSIONAL SERVICE

ALL ASPECTS UNDERTAKEN

FIND US ON FACEBOOK



# Ormerod Electrical LIMITED



01984 568589

07855 064189

[www.ormerodelectrical.co.uk](http://www.ormerodelectrical.co.uk)



Domestic and Commercial Electrical Services  
and Contractors

FREELANCE  
HAIRDRESSERS'  
ASSOCIATION



**JANET MORRIS**

**Freelance  
Hairdresser**

Gents, Ladies &  
Children

For appointment or  
consultation please call

01823 660191  
07768 648244

**Mariah Payne**

Lady Painter & Decorator  
with 20 Years' Experience



Free  
Estimates  
Given

**Quality  
Workmanship**

Interior & Exterior

Paintwork, Wallpapering  
& Tiling

Mob: 07776 423418

Stallards, Standle, Wellington,  
Somerset TA21 9NJ



**Somerset  
Electricians**

Your Local Electrician  
07860518025

[www.somsetelectricians.co.uk](http://www.somsetelectricians.co.uk)  
[somsetelectricians@gmail.com](mailto:somsetelectricians@gmail.com)

Sp Adobe Spark

**ANDREW LOVELL**

**Chimney Sweep**



**Clean and Efficient**

**07946 303905**

23 Spring Gardens  
Wiveliscombe  
TA4 2LQ



**Ben Dixon**  
Building & Property Maintenance

**COVERING ALL ASPECTS OF BUILDING WORK**

EXTENSIONS, LANDSCAPING & PATIOS,  
RENOVATIONS, FITTED KITCHENS & BATHROOMS,  
PAINTING & DECORATING

SOUTH GUNDENHAM BARN, LANGFORD BUDVILLE, WELLINGTON  
TA21 0QR

TEL: 07720 845695

EMAIL: [benandmeldixon@yahoo.co.uk](mailto:benandmeldixon@yahoo.co.uk)

## **HARVEY & WADE LTD**

### **Hand Crafted Kitchen Furniture**

All made in the UK/Complete Project Management/  
Bespoke Design Package/Full Installation Service



### **Showroom in Honiton**

38 High Street, Honiton, Devon, EX14 1PJ - Telephone 01404 41655

Website: [www.harveyandwade.co.uk](http://www.harveyandwade.co.uk) Email: [sales@harveyandwade.co.uk](mailto:sales@harveyandwade.co.uk)

**We're on-site 24/7.**

Unlike a lot of vets, we ensure your pets have a qualified nurse on-site throughout the night should they need anything; and one of our vets just a call away.

24H Emergency Service available 365 days a year

Merry  
CHRISTMAS  
&  
HAPPY NEW YEAR  
2021

mountvets.com

**MOUNT VETS**  
VETERINARY HOSPITAL



Tel: (01823) 662286



Taunton Road,  
Wellington  
TA21 9FG



9 Mantle Street, Wellington, TA21 8AR

**01823 618921**

**Carpets Curtains  
Beds & Blinds**

Carpet ● Sheet Vinyl ● Karndean ● Laminate  
● Remnants ● Solid & Engineered Wood

All can be expertly installed by our team of experienced fitters giving you the best possible lasting results.



Curtains & Blinds made to measure from our extensive range of fabric designs.

Large selection of voiles, tracks & poles to order.

C&C's dedicated bed showroom, offering you a wide range of bed bases, mattresses & headboards all available in various sizes.

*Come and see what we can do for you*

candcarpets@hotmail.co.uk

find us on  

candhome.co.uk



**cakes Jackies cakes**  
**Email – topside@tiscali.co.uk**  
**Tel – 01823 672817**  
**Mobile – 07866 125061**

## *Jackie's cakes & catering*

Delicious, fresh, home cooked cakes. Bespoke for all occasions; weddings, christenings, birthdays, celebrations - or just because you're worth it!

Catering for funerals; Buffets for 20-200 people, from setting the table and chairs to the washing up, saving you time to spend with family, friends or guests on a busy day.

Scones freshly cooked for an afternoon cream tea.



TREE SERVICES LIMITED



QUALIFIED  
WORKFORCE

# BRENDON HILL TREE SERVICES

01823 461789 • 07971 531333

[www.brendonhill.co.uk](http://www.brendonhill.co.uk)  
[info@brendonhill.co.uk](mailto:info@brendonhill.co.uk)

**FREE WRITTEN QUOTATIONS**



TREE SERVICES LIMITED



QUALIFIED  
WORKFORCE

## All Aspects of Arboriculture & Tree Surgery

**Agricultural and Domestic Fencing  
Hedge Laying, Coppicing and Felling**

**Kiln Dried Logs and Woodchip for Biomass Boilers BSL REGISTERED**

**FULLY INSURED - NC ARB & NPTC QUALIFIED**



**A.J. WAYGOOD**  
**PAINTER &  
 DECORATOR**

*FREE QUOTATIONS  
 ALL ASPECTS OF DECORATING  
 FRIENDLY & RELIABLE*



 [Checkatrade.com](http://www.checkatrade.com)  
 Where reputation matters

TEL: **07552445388**  
 EMAIL: [AJWAYGOOD@HOTMAIL.COM](mailto:AJWAYGOOD@HOTMAIL.COM)  
 WEB: [WWW.WAYGOODDECORATING.COM](http://WWW.WAYGOODDECORATING.COM)



For all your chimney works in Somerset & Devon

**Services Include**

- Chimney Maintenance •Chimney repairs
- Leadwork •Chimney rebuilds
- Chimney pot and cowl installation
- Chimney surveys using video analysis



Complete Chimneys is a family run business covering all aspects of chimney works. With over 20 years experience in the building and chimneys trade we pride ourselves on offering the best customer service and completing work to the highest possible standard

Call us on **07974208628**  
 E Mail [marcusayres@yahoo.co.uk](mailto:marcusayres@yahoo.co.uk)  
 Website [www.completechimneys.net](http://www.completechimneys.net)

**H Tredwin & Son Ltd**

Funeral Directors

15 & 17 North Street, Wellington



Providing Wellington and the surrounding parishes with a  
 proficient, personal and caring service at **all** times

Private chapels of rest  
 Pre-paid funeral plans

**Contact Nick or Louise Tredwin**  
**Telephone 01823 672287**



# O M Hines Ltd

## Plumbing, Heating & Oil Tank Specialist

### Quality Boiler Servicing Price

Plus parts if required plus VAT

Full Gas Boiler Service

£58

Full Oil Boiler Service

£88

### Other Services

- ✓ Replacement Radiators
- ✓ Replacement Boilers
- ✓ Complete Systems
- ✓ Bathrooms / Showers
- ✓ Oil tank installation & maintenance



Office: 01984 623424

Unit 19-20 Station Road, Wiveliscombe TA4 2LX

info@omhines.co.uk

www.omhines.co.uk



## Secure Self Storage Taunton . Lopen . Dorset

Secure, purpose-built, indoor self storage  
that's simple, flexible & affordable.



A member of our helpful team are always on site during office hours and will even accept your deliveries for you

beehive  
self storage



- 24 hour digital CCTV
- Monitored alarms
- Packing materials in stock
- Insurance options available

[www.beehiveselfstorage.co.uk](http://www.beehiveselfstorage.co.uk)



# ASHCULME

TREE WORK | LANDSCAPING | FENCING | PAVING | MAINTENANCE

[www.ashculme.co.uk](http://www.ashculme.co.uk)

YOUR PROFESSIONAL, RELIABLE & ESTABLISHED LOCAL FIRM

**TREE WORK** TREE REMOVAL | CROWNING | LIFTING & MORE..

**STUMP GRINDING**

24hrs a day 7 days a week

**07815146343**

**LANDSCAPING**

**Emergency Call Out**

**FENCING**

NEW INSTALLATIONS OR REPAIRS TO EXISTING

**TURFING**

PREPARATION & LAYING OF NEW LAWNS

**PAVING**

NEW INSTALLATIONS OR REPAIRS TO EXISTING

**GARDEN MAINTENANCE**

COMPLETE SERVICE

Call today for a free quote on any of our services

**01823 353302**



# DEEJAY SECURITIES LIMITED



burglar alarms - cctv  
beams - door access

**JULIAN JONES**  
**07711 567736**

Office tel: 01823 663 821  
email: [info@deejaysecurities.co.uk](mailto:info@deejaysecurities.co.uk)  
[www.deejaysecurities.co.uk](http://www.deejaysecurities.co.uk)

Stallards  
Standle  
Wellington  
Somerset  
TA21 9NJ



A printed annual guide and website  
where local people **recommend**  
**good quality** and **trustworthy**  
businesses



Helps you avoid  
Cowboys and Rogue Traders  
**OUR LOCAL Expert .co.uk**

Not online?  
**Call Nick: 01823 218222**  
For your free printed guide

# Need some help?

Event support - (we provide a refreshments stand at events )  
dinner parties, function catering/setup/clear up support.

House blitzes, Service support, Spring cleaning, Care support.

Established since 2007- fully insured and reliable help -

**Whatever you need, if we can't help, we  
probably know someone who can!**

**Contact Denise Masters:**  
**077 730 70219 / 0800 756 6425**  
**E: [need.some.help@hotmail.co.uk](mailto:need.some.help@hotmail.co.uk)**

# Local Transport Services

Somerset County Council has launched a traffic and travel website which provides live updates from the Council's traffic control team.  
[www.travelsomerset.co.uk](http://www.travelsomerset.co.uk)

## Slinky Bus

- ♦ **Anyone** in Langford Budville can use the bus. It is free for those with a bus pass and a reasonable fare will be charged for everyone else.
- ♦ To use the bus you **must** register in advance. Download a form from: [www.movingsomersetforward.co.uk/public-transport/slinky-services-demand-responsive-transport](http://www.movingsomersetforward.co.uk/public-transport/slinky-services-demand-responsive-transport) or call 01823 331266.
- ♦ To use the bus you have to book a place at least 24 hours and up to 14 days in advance. Bookings can be made between 9.30-3.30, Monday to Friday by calling 01823 331266.
- ♦ The Slinky bus will make up to three return journeys a day at approximate times to Wellington and once to \*MPH. When you make your booking, check the current times which can change.

\*There will be an extension to and from Musgrove Park Hospital on Monday, Wednesday and Friday for those who cannot use conventional buses.

.. It isn't possible to just turn up at a bus stop and board.

**Any problems, ring 0300 123 2224 or email [transport@somerset.gov.uk](mailto:transport@somerset.gov.uk).**

## Wivey Link

Going Places.....



**Do you have difficulty getting out and about?**

- Door to door service operating from Wiveliscombe, we cover all surrounding Parishes, Taunton and Wellington. We will take you shopping, visiting or for hospital/doctors etc.
- Wheelchair friendly cars.
- Fares are very reasonable and bus pass holders get a concessionary rate.

**Could you make a difference to the community in which you live by becoming a driver for this essential service?**

**For more information on using Wivey Link or Volunteering telephone 01984 624666**

or call into the Community Office The Square Wiveliscombe TA4 2JT

we are open 10.00 to 1.00 Monday to Friday

Wivey Link a division of the Wiveliscombe Area Partnership

Charity No. 1132983

# Community Contacts

<b>Parish Council</b>		
Chairperson	Derek Sowden	dereksowden@hotmail.com
	Juliet Shrimpton	julietlbpc@gmail.com
	Julian Kupfer	jklbpc@gmail.com
Parish Clerk		langfordbudvillepc@gmail.com
<b>Churches</b>		
Team Vicar	The Rev Alan Ellacott	01823 669824 rev.aellacott1969@btinternet.com
<b>Church Contacts</b>		
Langford Budville	Sarah Nutt Acting Administrator	01823 401261 sarahnut@care4free.net
Runnington Church Wardens	John Houghton	01823 661323
	Michael Huntingford	mhuntingford@zcmarine.co.uk
<b>Jubilee Hall</b>		
Chairman	Michael Huntingford	mhuntingford@zcmarine.co.uk
Vice Chairman	Andy Pritchard	Pritchard.family2@btopenworld.com
Secretary	Margaret Brown	margaret.jbrown@icloud.com
Treasurer	Pam Farr	pjayfarr@gmail.com
<b>Booking enquiries</b>		www.lbjubileehall.com
<b>Primary School</b>		
Acting Head of School	Moira Brown	01823 400483 langfordbudville@educ.somerset.gov. uk
<b>Police</b>		
Beat Officers Tel: 101 Crime recording 999 Emergencies	PCSO Vicky Henderson	Victoria.Henderson@avonandsomerset. police.uk tel: 07889 655302
	PCSO Louise Fyne 6945	Tel: 07889 659476

**Village Website:** [www.langfordbudvillevillage.co.uk](http://www.langfordbudvillevillage.co.uk)

**Jubilee Hall Website:** [www.lbjubileehall.com](http://www.lbjubileehall.com)

**Greener Langford Budville team:** [www.greenerlangfordbudville.com](http://www.greenerlangfordbudville.com)

## Magazine Information

**Editorial team:** Saranne Cessford & Tryphena Huntingford - joint editors  
Denise Hunt - Treasurer; Jane Hancock; Juliet Shrimpton; Zenah Rowe

To contact us please email: **lbr.roundabout@gmail.com** heading your email: Articles, Feedback, Advertising, Small Ads, etc.

Our final copy dates:

### Round About:

December/January edition 19 November

February/March edition 19 January

### Round About in Brief:

November edition: 22 October

No January edition

**Cover photograph:** Wilf, pond dipping at Chipley Mill. Photo Saranne Cessford

RA printed by Zeralynx: 01823 251888: [info@zeralynx.co.uk](mailto:info@zeralynx.co.uk)

## Advertising Rates

This magazine is distributed free of charge to around 300 households in and around the villages of Langford Budville and Runnington.

Commercial	6 editions		1 edition
	Mono	Colour	Mono
¼ page	£30.00	na	£7.00
½ page	£60.00	£100.00	£13.00
A5 page	£100.00	£200.00	£25.00

Sponsorship of articles for a 1 year, six edition period is also available, as well as special rates for charitable and non-commercial advertising.

### Small Ads - Non commercial

#### For Sale items:

Under £10: up to 4 lines free; additional lines £1.00 each.

Over £10: 50p a line for first 4 lines, additional lines £1.00 each.

**Wanted items:** £1.00 per 2 lines.

Contact us at **lbr.roundabout@gmail.com** to discuss your requirements.



## Runnington Cider Barn

Rent West Apartment for business or holiday

Come and stay in our lovely beamed Barn, full of character  
in peaceful hamlet near River Tone.

Wonderful, peaceful, sunny, uplifting atmosphere.

West Apartment is on the ground floor of Cider Barn

We are surrounded by footpaths, and you can walk to excellent local cafes  
or the Martlet Inn

Come and chat to me about it

Louise Bancroft - 01823 665533/07835 960704

[Anna.louise951@gmail.com](mailto:Anna.louise951@gmail.com)

[www.runningtonciderbarn.co.uk](http://www.runningtonciderbarn.co.uk)



## SEAN REEVES

ELECTRICAL SERVICES

**01823 400324 • 07710 618892**

Little Pippins, Langford Budville, Wellington

Somerset TA21 0RD

[sean.a.reeves@hotmail.co.uk](mailto:sean.a.reeves@hotmail.co.uk)

**Electrical Safety  
Register**

incorporating  
ELECSA  ECA  
Certification Ltd 



# THE Martlet INN

A stylized black silhouette of a martlet bird in flight, positioned above the word 'Martlet' in the logo.

We are really happy to announce the re-opening of this wonderful pub and are looking forward to becoming part of the fantastic Langford Budville Community.

**The Martlet Garden and restaurant are open daily serving our full new food menu and drinks.**

## Opening hours:

**Monday to Sunday 11.00 am to 11.00 pm**

**Food served Monday to Friday  
12.00 to 2.30 pm and 5.00 to 9.00 pm**

**Saturday: Midday until 9.00 pm**

**Sunday: Midday until 4.00 pm**

We will still offer takeaways during food service times

Booking is not essential, but is advised to ensure that you get a table at your preferred time.

**Fb: THEMARTLETINN**

**01823 401330**

**or email: [info@thebearinnwiveliscombe.com](mailto:info@thebearinnwiveliscombe.com)**